

Proudly Canadian

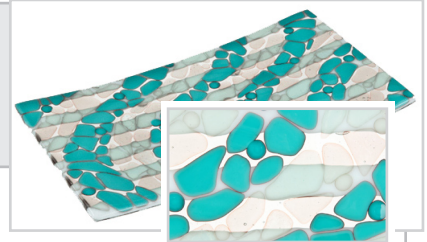


New SYS96® Fusing and Stained Glass Products from Uroboros

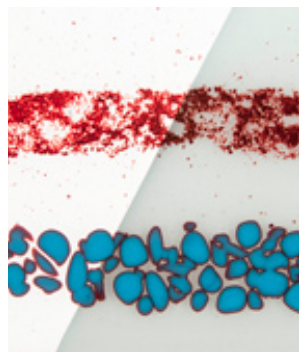
About Uroboros Red Reactive Glass

Uroboros' unique glass formula for System 96 creates an interface colour or "reaction" when melted against certain other colours. The reaction is a noticeably reddish hue, thus the name "Red Reactives". Follow the links in the bubble below to read more about the chemistry of the reactive glass, and see the detailed charts of other reactions that will occur with different glasses.

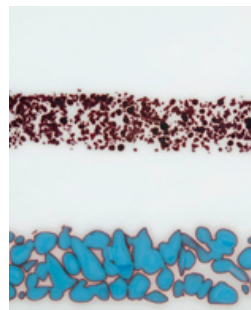
Reactive Fusible System 96® Glass



Rectangular Platter: Transparent and Opal frits fused on strips of Red Reactive Opal and Red Reactive Transparent.



Red Reactive Transparent Sheet Glass
UR 60003-96
Shown here the Red Reactive Transparent glass is fused over a half clear, half opal tile. Fine Sky Blue (F2-5331-96) and Mosaic Turquoise Opal (F7-2334-96) are fused on top to show the reaction colours.



Red Reactive Opal Sheet Glass
UR 60045-96
Shown here, Fine Sky Blue (F2-5331-96) and Mosaic Turquoise Opal (F7-2334-96) are fused on top of the Red Reactive Opal sheet glass to show the reaction colours.



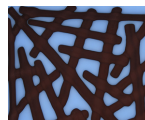
Wisteria Blossoms: A variety of blue and green frit react to a base of Red Reactive Transparent.



Red Reactive Transparent Frit
F1 through F3-003-96
The frit form in transparent of our unique Red Reactive Transparent glass formula creates an interface colour or "reaction" when melted against certain other colours. Available from Hollander in F1 (powder), F2 (fine), and F3 (medium).

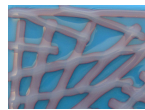


Red Reactive Opal Frit
F1 through F3-045-96
Shown here is the opal frit. Available from Hollander in F1 (powder), F2 (fine), and F3 (medium).



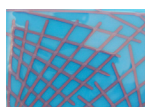
Red Reactive Transparent Noodles - UR N003-96
Red Reactive Opal Noodles - UR N045-96

Same reaction as the glass, but in the form of a noodle. Both the transparent and opals are shown here on a Riviera Blue tile (UR 60421-96), the Transparent Noodles fuse to a dark, Dusty Rose, and the Opal Noodles fuse to light, pastel pink with a dark, Dusty Rose outline. 5oz tubes.



Red Reactive Transparent Stringer - UR S003-96
Red Reactive Opal Stringer - UR S045-96

As above, but in the form of a Stringer. Both the transparent and opals are shown here on a Riviera Blue tile (UR 60421-96), the Transparent Stringers fuse to a dark, Dusty Rose, and the Opal Stringers fuse to light, pastel pink with a dark, dusty Rose outline. 5oz tubes.



Download UROBOROS Support Materials on our web site at:

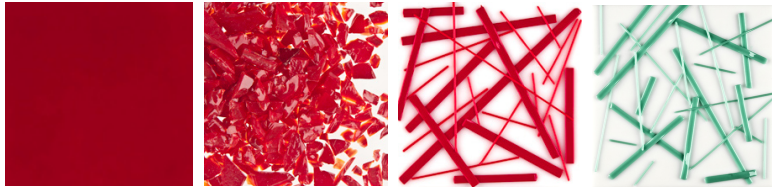
http://www.hollanderglass.ca/newproducts_sg.html

<http://www.uroboros.com/pdfs/WhatsNew/ReactiveColorChart2011.pdf>

Also, refer to the Uroboros New Products Listings at:

http://www.uroboros.com/whats_new/Winter_System_96.html

More Fusible Glass



Lipstick Red Opal UR 60615-96

This is the darkest Red available in the palette and it is dark and luscious

Lipstick Red Opal Frit UR F1-615-96, UR F2-615-96 & UR F3-615-96
Powder, fine and medium.

Lipstick Red Opal Noodle and Stringer
UR N615-96 / UR S615-96

Pastel Green Opal Noodle and Stringer
UR N2222-96 / UR S2222-96



UR IVP96

Iridized Clear Variety Pack UR IVP96

12"x12" 4 pieces. A carefully selected assortment -each with a rainbow iridescent sheen.



UR HRVP96

Handrolled Variety Pack UR HRVP96

12"x15" 4 pieces (5 sq ft). Hand selected from Uroboros' full range of glass styles, it will contain, 1 12"x15" UR 6000-96 GIR, a 12"x15" Streaky, a 12"x15" Mardi Gras, and a 12"x15" Opal.



Handrolled Studio Crate HRSC96

12"x15" 30 pieces, 15"x24" 5 pieces (50 sq ft). The broadest possible range of colours, textures and styles- an exceptional value and a pleasing collection.



Hot Colour Assortment HS96

12"x12" 5 pieces. Bold, brash and happy-easy-to-handle size in colours that are as expressive as they are useful.

Stained Glass

Forest Park



UR 10766 (front)

Giverny Pond

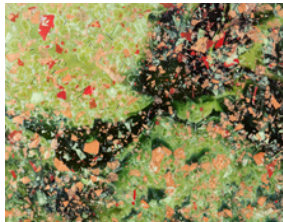


UR 10869 (front)

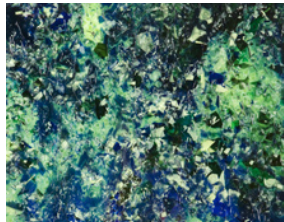
Autumn Stream



UR 10910 (front)



UR 10766 (back)



UR 10869 (back)



UR 10910 (back)

UR 10766 - Forest Park
Chartreuse and Olive Greens are mixed expertly with a woody Brown and Amber. The reverse side is laden with Chestnut, Red Opal and Blue Green Fractures, then a riot of dark green streamer bits are added for a smoky, shady atmosphere.

UR 10869 - Giverny Pond
Wonderful for a Water Lily background, and so much more. Delve into it's deep Blues, Emerald Greens and pools of Oasis Green Opal. A touch of Gold Pink streaking through it adds rich pink, purple and mauve highlights. The reverse side is a sea of floating green and blue fractures with dark green streamer bits.

UR 10910 - Autumn Stream
Rich Brown and Celadon Green Opals have Cobalt Blue and Spring Green swirling through it. The reverse side is covered in Amber, Green and Red Opal Fractures and is sprinkled with dark green streamer bits.



LB - Leaves & Branches

12"x12", 8 pieces. A natural, woody, selection of shady greens, mushroom browns, and rich loamy darks.



FP - Flower Power

12" x12", 8 pieces. This is a cheery, blooming bouquet of carefully chosen pieces for those very special florals.



RMV - Ring Mottle Variety Pack

12" x12", 8 pieces. Ring Mottles, selected by hand, to provide you with a full range of hardworking options.