

INDEX

Art Glass Overview.....	Page A-2
Armstrong.....	Page A-17
Artique®.....	Page A-8
Baroque™.....	Page A-7
Bullseye.....	Page A-19
C80.....	Page A-28
Catspaw.....	Page A-16
Chinese Pattern Glass.....	Page A-30
Dragon Paks.....	Page A-30
Drapery Glass.....	Page A-25
English Muffle.....	Page A-10
Fibroid.....	Page A-25
Flashed White Opal On Clear.....	Page A-29
Float Glass And Mirror.....	Page A-29
Glue Chip, Clear.....	Page A-31
Glue Chip, Coloured.....	Page A-31
Globs.....	Section E
Kokomo.....	Page A-14
Kokomo Dalles.....	Page A-32
Mystic.....	Page A-13
Noogie.....	Page A-29
Nuggets.....	Section E
Oceana.....	Page A-27
OpalArt™.....	Page A-7
Optimum.....	Page A-29
Rondels.....	Section E
Sahara.....	Page A-28
SilverCoats™.....	Page A-8
Spectrum.....	Page A-3
Spirit™.....	Page A-7
Stipple.....	Page A-26
Textured Clear Bin Size Sheets.....	Page A-28
Uroboros.....	Page A-23
Vegla.....	Page A-28
Vertigo.....	Page A-16
Waterglass®.....	Page A-7
Wissmach.....	Page A-9
Youghiogheny.....	Page A-26

ART GLASS - OVERVIEW

ORDERING

Ordering information for all of the different types of glass we carry are listed in a box, like the one shown below, on each manufacturer's page:

GLASS FACTS
Info on sheet size etc:

Orders placed for Art Glass are for full sheets of manufacturer's standard glass sheet size.

EXACT CUTS

Customers periodically ask us for exact cuts to fill specific needs. **This service is for architectural pattern glass only.**

We will do exact cuts - straight lines only - and will be pleased to quote on large quantity special cuts. Please note that our tolerances for exact cuts are +/- 1/16".

For small quantities of glass cut to exact sizes, round up the dimensions to the nearest even inch to calculate the area for pricing, and add 60% to the Level 1 prices. There is a \$ 50.00 minimum charge for exact cuts.

We reserve the right to charge additional if the size requested results in excessive waste, and to decline jobs completely for certain types of "difficult to cut" glass.

RETURNS

Once Glass has been ordered it cannot be returned. See our general policies under GENERAL INFO PRICING POLICIES at front of catalogue.

BACK ORDERS

We will not normally back order glass.

CRATE & PALLETIZING

We can generally pack about 200 to 400 square feet of Art Glass per crate, however, this can vary depending on the type of glass ordered, the type of crate being used, and whether the

different types of glass ordered can be safely mixed in the same crate.

Glass must always travel in a vertical position and to prevent damage during shipment we strap the crate(s) to a pallet. We can usually, but not always, put up to three cases on one pallet.

For Art Glass, there is a \$30.00 per crate glass packing charge, and a \$10.00 palletizing charge. Full sheets of GNA, C80 and MNA glass require larger crates at a cost of \$40.00 per crate, and a large skid charge of \$30.00.

NEW - Return your clean Spectrum crate complete with lid in good condition and we will credit your account \$10.00.

There is no packing charge for full unopened factory packed cases of glass.

Glass crates requiring special packing will normally be billed at higher rates which reflect the extra handling and cost of building the special crate(s) needed. This is typical of Architectural size glass sheets where cost is \$60.00 per crate, **and skids are \$30.00 each.**

TRUCK SHIPMENTS - DAMAGE CLAIMS

Once glass has left our premises the responsibility for its safe delivery passes to the trucking company. It is your responsibility to carefully examine the shipment for signs of damage or mishandling when the goods are delivered. If there is reason to believe that there is damage, either hidden or visible, mark the delivery slip as such before the driver leaves. Then call the trucking company to commence an insurance claim.

SMALL PARCEL SHIPMENTS

For those unexpected emergencies, we will be happy to cut and pack a few sheets (up to 3 sheets max) of Art

Glass to ship via UPS or Canpar.

We cut the sheets down and bubble pack them for shipment in small cardboard boxes.

Our success rate for this type of shipment is quite high, and we have had very few instances of breakage. Nevertheless, small parcel services refuse to accept responsibility for breakage and so do we! So such shipments are entirely at your risk. All glass sent this way is billed at the Level 1 price and there is a \$5.00 per sheet special handling and packing fee.

ORDER PROCESS TIME

For truck shipments, we try to ship your glass within two working days from the time we receive your complete order or get your last "Add-On".

We can normally ship UPS or Canpar orders within one day, unless things are really busy in which case it may take two days also. We will do our best to get small parcel orders out quickly!

SAMPLES

When available, we carry factory sample sets. The factory sample sets may therefore, contain glass that we do not carry. Some glass that we do not carry as a regular stock item may be "special ordered".

SPECIAL ORDER ITEMS

Although we carry the most popular colours, we may not have all available types and colours of glass from all manufacturers. We can "special order" glass for you when we process our next shipment from that particular manufacturer. Special orders may be subject to minimum quantity requirements, special pricing and surcharges as set out by each manufacturer.



Spectrum Glass has proven to be the number one choice of stained glass crafters everywhere. It is widely used by lamp manufacturers and artists, as well as beginners. The smooth surface and careful annealing of Spectrum Glass provide for excellent cutability. Well mixed, reproduceable colours as well as exciting textures make this glass especially appealing to designers. Of special interest are Waterglass, Artique and Baroque glass! Waterglass has a longitudinal, irregular, rippling effect achieved by stretching the glass while it is still hot. Artique, is a re-creation of the spirit and character of mouth-blown antique glass. Baroque has a swirling effect similar to reamy antique, a texture achieved by mixing glass of different temperatures. We're sure you'll be impressed by all of these products. Spectrum has put years of experimentation and refinements into their process in order to offer an excellent product.

Explanation of Our Numbering System

Spectrum Glass is classified by a code system which permits users to visualize the product even without a sample in hand. The system attempts to identify colours by number, and in most cases describes lightness or darkness, colour dominance, light transmission and texture. Though the system is imperfect, and most rules have their exceptions, with a little study and practice you will find this a reasonably understandable method of communicating about Spectrum glass.

The code is basically numerical, with digits to designate:

- * Category --- general product description
- * Colour (s)
- * Degree of translucency
- * Intensity of colour (lightness / darkness)

CATEGORY: Always the 1st digit in a product code

- * 100 series = Cathedrals (single non-opal colours).
- * 200 series = Opal glasses, either solid colours (opalized) or non-white opals in a cathedral mix.
- * 300 series = Mix of single cathedral colour with white opal.
- * 400 series = Mix of two cathedral colours.
- * 500 series = One cathedral colour described by blended hues (like greenish blue).
- * 600 series = Multi-colour mixes (3+) including white opal.
- * 700 series = Multi-colour mixes (3+) not including white.
- * 800 series = One Blended-hue cathedral (500 series) mixed with white opal.

100 Series:

- * 1st digit-category (100 series)
- * 2nd digit-indicates colour
- * 3rd digit-indicates intensity

*Example: 140.8** = Cathedral, purple, pale*
***Where a decimal point appears in any code it relates to a colour intensity that has decreased below the number 1, thus, a pale shade.*

200 Series:

- * 1st digit- category (200 series)
- * 2nd digit- base colour
- * 3rd digit- added colour or influencing hue.
- * 4th digit- after a point, indicates translucency.
- * 5th digit- intensity of the dominant colour.

Example: 291.61 = Solid opal, amber-ish pink, semi-translucent, light intensity (Champagne)

300 Series:

- * 1st digit-indicates category (300 series).
- * 2nd digit-indicates colour.
- * 3rd digit-indicates translucency.
- * 4th digit-after a point, indicates intensity of the cathedral colour.

Example: 329.6 = Opal mix, green, wispy - dark

COLOUR: Primary colours are designated as follows:

- * 1 = Amber * 4 = Purple * 7 = Orange * 0 = Clear
- * 2 = Green * 5 = Red * 8 = Grey * 00 = Black
- * 3 = Blue * 6 = Yellow * 9 = Pink

INTENSITY: The relative lightness or darkness of the colours, starting from 0 = clear

- * 0.1 to 0.9 = pale * 3 to 4 = medium * 7 to 9 = very
- * 1 to 2 = light * 5 to 6 = dark dark

TRANSLUCENCY: The degree of light transmission, as affected by the proportion of opal, white or coloured, in the product. Actual light transmission is also related to the colour intensity and texture of the glass.

Examples:

- * 5 = Semi-dense (Mostly opal with swirls of colour)
- * 6 = Semi-translucent
- * 7 = Translucent (About 50% colour, 50% opal)
- * 8 = Semi-transparent
- * 9 = Most transparent (Mainly colour with swirls of opal, "wispy")

Texture Codes (Suffixes)	
A	Artique®
BR	Baroque™
C	Chord
CC	Corsica
CZ	Corteza
FLUTE	Flute
G	Granite

Texture Codes (Suffixes)	
GG	Crystal Ice
H	Hammered
HS	Baby Hammered
K	Krinkle
QR	1/4" Reeded
R	Ripple
RR	Rough Rolled

Texture Codes (Suffixes)	
RW	RainWater
S	Smooth
SDY	Seedy
SF	Smooth Fusible SYS96™
SN	Satin
W	Waterglass®

Texture Codes (Suffixes)	
V	Vecchio
Finishes (Prefixes)	
I	Iridescent
SC	SilverCoats™
Styles (Prefixes)	
OA	OpalArt™
SS	Spirit™

Hollander Glass Canada Inc.

A - ART GLASS

Spectrum Glass Facts

The prefix for Spectrum is "SP". Please add to codes when ordering.

Regular Sheet & Case Sizes: (100W, 1009W and Non-Waterglass)

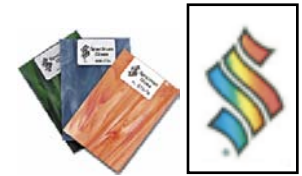
- Approximately 24" x 48" = 8 sq.ft. per sheet
- Waterglass case has 52 sheets or 416 sq.ft.
- Non-waterglass case has 58 sheets or 464 sq.ft.
- All SF suffix glasses are 24" x 24" except Spirit and OpalArt.

Waterglass Sheet & Case Sizes: (except Clear & Black)

- *NEW* - Sheet size varies between 18" - 22" x 48"
- *NEW* - Average Waterglass sheet contains about 7.3 sq.ft.
- *NEW* - Full Case usually contains 52 sheets or 381 sq.ft.

Spectrum Sample Set

Order your sample sets now. The sets are available as follows...



Stock No.	Description
SP SAMAAG	Spectrum Architectural Glass Sample set
SP SAMCD	Spectrum Digital Image Library 2005 CD
SP SAMMASTER	Spectrum Master Sample Set
SP SAMPLES	Spectrum Standard Sample Set
SP SAMSC	Spectrum Silvercoat Sample Set

Stock No.	Description	Price Code
Clear Cathedral		
100A	Artique	E
100BARN	Barnwood	A
100BR	Baroque	G
100C	Chord	A
100CC	Corsica	A
100CR	Crackle	A
100CZ	Corteza	A
100FLUTE	Flute	D
100G	Granite	A
100GG	Crystal Ice (Sparkolite) 3mm	A
100H	Hammered	A
100HS	Hammered Small	A
100K	Krinkle	A
100QR	Quarter-Reeded	A
100R	Ripple	D
100RR	Rough Rolled	A
100RW	RainWater	A
100SDY	Seedy	0
100SN	Satin	A
100SNSDY	Satin Seedy	A
100V	Vecchio	A
100W	Waterglass, 24" Wide	D
Clear Cathedral Extra Long		
A/100A	Artique 26"x72", 3mm	ARCH4
A/100BR	Baroque 30"x72", 3mm	ARCH6
A/100C	Cord 30"x72", 3mm	ARCH2
A/100FLUTE	Flute 26"x72", 3mm	ARCH7
A/100G	Granite 30"x72", 3mm	ARCH2
A/100H	Hammered 30"x72", 3mm	ARCH2
A/100K	Krinkle 30"x72", 3mm	ARCH2
A/100RW	RainWater 30"x72", 3mm	ARCH2
A/100SDY	Seedy 30"x72", 3mm	ARCH1
A/100SNSDY	Satin Seedy 30"x72", 3mm	ARCH2
A/100V	Vecchio 30"x72", 3mm	ARCH2
A/100W	Waterglass 24"x72", 3mm	ARCH3
AA/100CC	Corsica 30"x84", 5mm	ARCH7
AA/100K	Krinkle 30"x84", 5mm	ARCH7
AA/100RW	Clear RainWater 30"x84", 5mm	ARCH7
AA/100SDY	Clear Seedy 30"x84", 5mm	ARCH5

Stock No.	Description	Price Code
White and Neutral Opal		
200CC	White Solid, Corsica Texture	A
200S	White Solid, Semi-Translucent	C
201.61S	Ivory Translucent	A
209FL	Firelight White, Semi-Translucent	E
209SF	Firelight Smooth, 24" x 24"	EF
209K	Crystal Krinkle, Semi-Translucent	E
210.71SF	Ivory Solid, 24" x 24"	CF
216.71SF	Khaki Solid, 24" x 24"	HF
218.71SF	Stone Solid, 24" x 24"	GF
305S	White/Clear Pearl, Semi-Translucent	AA
307S	Clear/White Translucent	AA
308S	Clear/White Translucent	A
309S	Clear/White, Wispy, Translucent	A
Amber Cathedral		
110.2RR	Pale Amber Rough Rolled	A
110.2S	Pale Amber Solid, Translucent	B
110.2V	Pale Amber Vecchio	A
110.8RR	Medium Amber Rough Rolled	A
111RR	Dark Amber Rough Rolled	B
110.8SF	Medium Amber, 24" x 24"	BF
111SF	Dark Amber, 24" x 24"	BF
Amber Opal		
315.02S	White/Pale Amber, Semi-Transl	AA
315.1G	White/Light Amber, Granite, Semi-Tr	AA
315.1S	White/Light Amber, Semi-Transl	AA
315.2S	White/Medium Amber, Semi-Transl	AA
315.6S	White/Dark Amber, Semi-Transl	A
317.02S	Pale Amber/White, Translucent	A
317.1S	Light Amber/White, Translucent	A
317.2S	Medium Amber/White, Translucent	A
317.6S	Dark Amber/White, Translucent	E
318.05S	Light Amber/White, Translucent	A
319.02S	Pale Amber/White, Wispy, Transl	A
319.1S	Light Amber/White, Wispy, Transl	A
319.6S	Dark Amber/White, Wispy, Transl	E

Bold type indicates new glass since last printing.



Stock No.	Description	Price Code
Bronze and Brown Opal and Cathedral		
211.74SF	Chestnut Brown, 24" x 24", Opal	HF
411.15C	Brown/Gold Streaky, Cord	A
411.15G	Brown/Gold Streaky, Granite	A
411.15S	Brown/Gold Streaky	A
518.1RR	Bronze Rough Rolled	B
818.91S	Bronze/White, Wispy, Translucent	B
Blue Cathedral		
130.8RR	Pale Blue Rough Rolled	A
130.8S	Pale Blue Solid	B
130.8V	Pale Blue Vecchio	A
132RR	Light Blue Rough Rolled	A
132S	Light Blue Solid	B
134H	Medium Blue Solid, Hammered	B
134RR	Medium Blue Rough Rolled	B
134S	Medium Blue Solid	C
136A	Dark Blue Artique	F
136RR	Dark Blue Rough Rolled	B
136S	Dark Blue Solid	C
533.1RR	Sky Blue Rough Rolled	A
533.1S	Sky Blue Solid	B
533.3SF	Deep Aqua, 24" x 24"	CF
533.3RR	Deep Aqua Rough Rolled	B
538.4RR	Steel Blue Rough Rolled	A
538.4SF	Steel Blue, 24" x 24"	BF
538.6RR	Navy Blue Rough Rolled	B
538.6SF	Navy Blue, 24" x 24"	CF
Blue Opal		
230.76S	Dark Cobalt Blue Solid, Semi-Tran	D
233.74SF	Turquoise Blue Solid, 24" x 24"	DF
233.75SF	Mariner Blue Solid, 24" x 24"	DF
238.72SF	Alpine Blue, 24" x 24"	DF
335.2S	White/Light Blue, Semi-Translucent	A
335.62	White/Dark Blue, Semi-Translucent	A
337.1S	Pale Blue/White, Translucent	A
337.2S	Light Blue/White, Translucent	A
337.6S	Dark Blue/White, Translucent	B
337.6SF	Crystal Opal Aqua/Cobalt Blue	CF
339.1S	Pale Blue/White, Wispy	A
339.6S	Light Blue/White, Wispy	A
339.6S	Dark Cobalt Blue/White, Wispy	B
633.7S	Sky Blue, Dark Blue/White, Transl	A
833.51S	White/Sky Blue, Semi-Translucent	A
833.91S	Sky Blue/White, Wispy	A
833.93S	Deep Aqua/White, Wispy	B
838.52S	White/Colonial Blue, Semi-Transl	A
838.72S	Colonial Blue/White, Translucent	A
838.74S	Steel Blue/White, Translucent	A
838.94S	Steel Blue/White, Wispy, Transl	A
838.96S	Navy Blue/White, Wispy, Transl	B

Stock No.	Description	Price Code
Green Cathedral		
121RR	Light Green Rough Rolled	A
121S	Light Green Solid	B
123H	Medium Green Hammered	B
123RR	Medium Green Rough Rolled	B
123S	Medium Green Solid	C
125RR	Dark Green Rough Rolled	B
125S	Dark Green Solid	C
523.2RR	Teal Green Rough Rolled	A
523.2SF	Teal Green Solid, 24" x 24"	BF
523.8RR	Hunter Green Rough Rolled	B
523.8SF	Hunter Green Solid, 24" x 24"	CF
526.2RR	Moss Green Rough Rolled	B
526.2SF	Moss Green Solid, 24" x 24"	BF
528.1RR	Sea Green Rough Rolled	A
528.4RR	Olive Green Rough Rolled	B
528.1SF	Sea Green Solid, 24" x 24"	BF
528.4SF	Olive Green Solid, 24" x 24"	BF
Green Opal		
220.76S	Dark Green Solid, Semi-Transl	D
222.72SF	Pastel Green Solid, 24" x 24"	DF
223.72SF	Turquoise Green Solid, 24" x 24"	DF
325.2S	White/Light Green, Semi-Transl	A
325.6S	White/Dark Green, Semi-Transl	A
226.74SF	Amazon Green Solid, 24" x 24"	DF
230.72SF	Medium Blue Solid, 24" x 24"	DF
327.2S	Light Green/White, Translucent	A
327.6S	Dark Green/White Translucent	B
329.1S	Pale Green/White, Wispy, Transl	A
329.2S	Light Green/White, Wispy	A
329.6S	Dark Emerald Green/White, Wispy	B
621.7S	Amber, Green/White	A
622.7S	Lime, Olive/White "Forest Green"	A
623.7S	White/Dark Green/Blue, Transl	A
823.72S	Teal Green/White, Translucent	A
823.92S	Teal Green/White, Wispy, Transl	A
823.98S	Hunter Green/White, Wispy, Transl	B
826.71S	Lime Green/White, Translucent	A
826.92S	Moss Green/White, Wispy, Transl	B
828.72S	Seafoam Green/White, Translucent	A
828.91S	Sea Green/White, Wispy, Transl	A
828.94S	Olive Green/White, Wispy, Transl	B

Bold type indicates new glass since last printing.

SPECTRUM "RACK PACK"

Spectrum's "Rack Pack" contains 80 pieces of 12" x 12" glass including regular & hot colour opals, cathedrals, and some Waterglass, Baroque, or Iridescent! A "best buy".

SP RACK	12 x 12'S "Rack Pack" 80FT/CS
---------	-------------------------------



Stock No.	Description	Price Code
Purple Cathedral and Opal		
140.8A	Pale Purple Artique	F
140.8RR	Pale Purple Rough Rolled	A
140.8SF	Pale Purple Solid, 24" x 24"	BF
140.8V	Pale Purple Vecchio	A
142A	Light Purple Artique	F
142RR	Light Purple Rough Rolled	A
142S	Light Purple Solid	B
142W	Light Purple Waterglass	D
146RR	Dark Purple Rough Rolled	A
146SF	Dark Purple Solid, 24" x 24"	BF
234.72SF	Cotton Candy Grape Opal, 24" x 24"	KF
240.72SF	Mauve Solid Opal, 24" x 24"	BF
240.74SF	Lilac Solid Opal, 24" x 24"	DF
345.2S	White/Light Purple Semi-Transl	A
347.1S	Pale Purple/White, Translucent	A
349.1S	Pale Purple/White, Wispy, Transl	A
349.2S	Light Purple/White, Wispy, Transl	A
349.6S	Dark Purple/White, Wispy, Transl	A
534.2RR	Violet Rough Rolled	A
534.2SF	Violet Solid, 24" x 24"	BF
543.2RR	Grape Rough Rolled	A
543.2SF	Grape Solid, 24" x 24"	BF
641.7S	Purple, Amber/White, Translucent	A
834.92S	Light Violet/White, Wispy, Opal	A
843.71S	Pale Lavender/White, Opal	A
843.92S	Light Grape/White, Wispy, Opal	A
Yellow Cathedral and Opal		
161A	Yellow Artique	K
161RR	Yellow Rough Rolled	H
161S	Yellow Transparent	H
260.72S	Lemon Yellow, Opal	H
365.1S	White/Yellow Opal	E
367.1S	Yellow/White, Translucent, Opal	H
369.1S	Yellow/White, Wispy, Opal	H
267.72SF	Sunflower Yellow, Opal, 24" x 24"	HF
Red Cathedrals and Opal		
151RR	Cherry Red Rough-Rolled	H
151S	Cherry Red Solid	H
152A	Ruby Red Artique	K
152G	Ruby Red Solid, Granite	H
152RR	Ruby Red Rough Rolled	H
152S	Ruby Red Solid	H
357.1S	Red/White Translucent	H
357.2SF	Crystal Opal Red	HF
359.1S	Red/White, Wispy, Translucent	H
675.5S	White/Orange-Red, Opal	E

Bold type indicates new glass since last printing.

Stock No.	Description	Price Code
Orange Cathedral and Opal		
107.2SF	Tangerine Solid, Striker, 24" x 24"	HF
171A	Orange Artique	K
171RR	Orange Rough Rolled	H
171S	Orange Solid, Transparent	H
375.1S	White/Orange, Opal	E
379.1S	Orange/White, Wispy, Opal	H
Grey and Black Cathedral and Opal		
1009S	Black Solid, Opal	C
180.8A	Pale Grey Artique	F
180.8RR	Pale Grey Solid Rough Rolled	A
180.8SF	Pale Grey Solid, 24" x 24"	BF
180.8V	Pale Grey Vecchio	A
385.2S	White/Light Grey, Opal	A
387.2S	Grey/White, Translucent, Opal	A
389.1S	Pale Grey/White, Wispy	A
Champagne and Gold Pink Cathedral and Opal		
290.72SF	Cotton Candy Pink, Opal	PF
291.61S	Champagne Solid, Opal	G
395.1S	White/Pink, Opal	K
397.2SF	Crystal Opal Pink	LF
399.1S	Pastel Pink/White, Wispy	K
591.1RR	Pink Champagne Rough Rolled	E
591.1SF	Pink Champagne, 24" x 24"	EF
591.1V	Champagne Vecchio	E
609.8S	Clear/White/Pink, Wispy, Opal	L
693.74SF	Crystal Opal Pink/Aqua	PF
891.61S	White/Pink Champagne, Opal	A
891.81S	Pink Champagne, Wispy, Opal	E
Corsica - Pearl Opal Art Mix		
6000.81CC	Clear/White-Pearl	C
6009.8CC	Clear/White/Black-ThunderHead	C
6011.85CC	Clear/Wht/Reddish Brn-Hawkwings	C
6021.86CC	Clear/Wht/Green/Brn-Rainforest	D
6022.82CC	Clear/White/Olive/Moss-Congo	C
6023.83CC	Clear/Wht/Aqua/Lime-Aqua-Lime	C
6024.84CC	Clear/White/Teal/Rose-Teal-Rose	C
6029.83CC	Clear/White/Pink/Green-Spring	P
6033.83CC	Clear/Wht/Navy/Aqua-Blue Yonder	E
6034.83CC	Clear/Wht/Aqua/Rose-Aqua-Rose	C
6034.86CC	Clear/Wht/Cobalt/Rose-Cobalt-Rose	C
6043.86CC	Clear/Wht/Grape/Aqua-Purple Haze	E
605.85CC	Clear/White/Burgundy-Sierra Red	C
6061.81CC	Clear/Wht/Yell/Amber-Meadowlark	E
6067.83CC	Clear/Wht/Lemon/Orange-Mimosa	E
6069.81CC	Clear/White/Pink/Yellow-Harmony	P
6076.83CC	Clear/Wht/Orange/Yellow-Inferno	E
6092.86CC	Clear/White/Olive/Pink-Heather	K
6093.86CC	Clear/Wht/Indigo/Pink-Indigo-Pink	K

Hollander Glass Canada Inc.

WATERGLASS



A natural surface texture created by stretching the hot glass sheet while it is still in a pliable state. The result is gentle, rolling waves that resemble the surface of a lake or stream. A Spectrum exclusive.



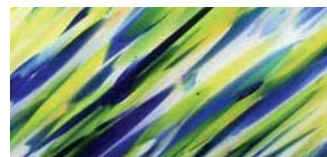
BAROQUE™

A “reamy” glass, produced by combining glasses of mis-matched compositions. The different glasses “oppose” each other when they are stirred together, creating artistic 3-D swirls. A Spectrum exclusive.



Stock No.	Description	Price Code
100W	Clear, 24” Wide	D
110.2W	Pale Amber	D
110.8W	Medium Amber	D
111W	Dark Amber	D
121W	Light Green	D
123W	Medium Green	D
125W	Dark Green	D
130.8W	Pale Blue	D
132W	Light Blue	D
134W	Medium Blue	D
136W	Dark Blue	D
140.8W	Pale Purple	D
142W	Light Purple	D
146W	Dark Purple	D
152W	Ruby Red	H
161W	Yellow	H
171W	Orange	H
180.8W	Pale Grey	D
190.1W	Pastel Pink	P
200.91W	White	G
291.91W	Champagne Opal	G
518.1W	Bronze	D
523.8W	Hunter Green	D
528.1W	Sea Green	D
528.4W	Olive Green	D
533.1W	Sky Blue	D
533.3W	Deep Aqua	D
534.2W	Violet	D
538.4W	Steel Blue	D
538.6W	Navy Blue	D
543.2W	Grape	D
591.1W	Pink Champagne	G
1009W	Black	D
Streaky Waterglass		
422.1W	Deep Olive/Sea Green	E
423.1W	Pale Green/Aqua Blue	E
433.1W	Deep Steel/Sky Blue	E
444.1W	Deep Violet/Pale Purple	E
451.20W	Ruby Red/Amber	H

Stock No.	Description	Price Code
100BR	Clear on Clear	G
130.8BR	Clear on Pale Blue	G
182BR	Clear on Pale Grey	G
300BR	Deep Burgundy on Clear	G
308BR	White on Clear	G
400BR	Black on Clear	G
430BR	Dark Blue on Clear	G
500BR	Cinnamon on Clear	G
523.2BR	Teal Green on Clear	G
591.1BR	Champagne on Clear	G
6000BR	Black/White/Clear	G
602.6BR	Emerald Green/White/Clear	G
603.9BR	Blue/White/Clear	G
604.1BR	Pale Purple/White on Clear	G
609.2BR	Pink/White/Clear-Peppermint Pink	P
6091.1BR	Champagne/White/Clear	G
800BR	Purple on Clear	G
900BR	Steel Blue on Clear	G



Spirit™

SS4361.76SF Atlantis

Sweeping comets of colour on either a clear or Firelight base creates a distinct, mouth-blown look. Fully heat-compliant for all hot glass crafts. A Spectrum exclusive.

Stock No.	Description	Price Code
SS4001SF	Murano, Clear/Ivory/Black	LF
SS431.76SF	Vienna, Clear/Ivory/Cobalt Blue	LF
SS4361.76SF	Atlantis, Clear/Ivory/Yellow/Blue	LF
SS4561SF	Rio, Clear/Ivory/Sunflower/Red	LF
SS4941SF	Valhalla, Clear/Ivory/Pink/Concord	MF
SS6115.7SF	Sedona, Firelight/Amber/Red	LF
SS623.76SF	Seattle, Green/Cobalt On White	LF
SS635.7SF	Philly, Firelight/Blue/Red	LF
SS6356.7SF	New Orleans, Firelight/Blue/Sunflower/Red	LF
SS694.7SF	Geneva, Firelight/Pink/Concord	MF

Bold type indicates new glass since last printing.

OpalArt™



OA/634.52SF Blackberry

Hypnotic OpalArt is created when disparate glasses are stirred together onto an opalescent base. The resulting broad swirls of colour are as unique as they are magnificent. Fully heat-compliant for all hot glass crafts. A Spectrum exclusive.

Stock No.	Description	Price Code
OA/233.54SF	Cascadia, Alpine/Deep Aqua	IF
OA/244.54SF	Orchid, Mauve/Dark Purple	IF
OA/325.52SF	Sour Apple, Firelight/Moss Green	IF
OA/335.5SF	Nautica, Firelight/Mariner Blue	IF
OA/623.52SF	Lagoon, Firelight/Moss/Deep Aqua	IF
OA/634.52SF	Blackberry, Firelight/Deep Aqua/Concord	IF
OA/675.5SF	Godiva, Firelight/Orange-Red	IF

Hollander Glass Canada Inc.

A - ART GLASS



SilverCoats™



A bright, reflective silver-coat is added to one side, turning specialty glasses into shimmering super-specialties perfect for projects that demand brilliance. SilverCoats reflect a rainbow of colour and texture.

Stock No.	Description	Price Code
SC100G	<i>Silver Granite, Granite</i>	S1
SC100QR	<i>Silver Reed, Quarter-Reed</i>	S1
Waterglass		
SC100W	<i>Quicksilver, Clear</i>	S1
SC110.2W	<i>Gold Water, Amber</i>	S1
SC121W	<i>Emerald Ice, Green</i>	S1
SC130.8W	<i>Blue Moon, Light Blue</i>	S1
SC140.8W	<i>Aurora Rose, Mauve</i>	S1
SC151W	<i>Candy Apple, Red</i>	S2
SC180.8W	<i>Gun Metal, Grey</i>	S1
SC528.1W	<i>Tree Foil, Seagreen</i>	S1
SC543.2W	<i>Ultra Violet, Grape</i>	S1
SC591.1W	<i>Metallic Blush, Champagne</i>	S1

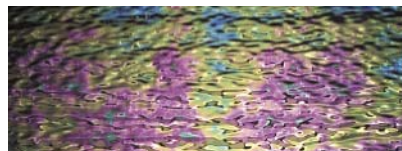
Artique®



A scribed "antique" glass, alive with the surface striations characteristic of mouthblown sheet glass. Artique unites brilliant surface characteristics, delicate light refraction and subtle but definite background distortion. A Spectrum exclusive.

Stock No.	Description	Price Code
110.2A	Pale Amber	F
110.8A	Medium Amber	F
121A	Light Green	F
123A	Medium Green	F
125A	Emerald Green	F
130.8A	Pale Blue	F
132A	Light Blue	F
523.2A	Teal	F
528.1A	Sea Green	F
533.1A	Sky Blue	F
538.4A	Steel Blue	F
543.2A	Grape	F
591.1A	Champagne	F

We stock the full range of Spectrum Glass. We also carry a variety of Spectrum's "T" Transition Glass - best buys! Watch your newsletter for details.



IRIDESCENTS

A micro-thin layer of metallic crystal has been bonded to these glasses during sheet forming, creating a colourful, shimmering surface effect.

Stock No.	Description	Price Code
I1009S	Black Solid	C + Ir
I1009W	Black Waterglass	D + Ir
I100A	Clear Artique	E + Ir
I100BR	Clear Baroque	G + Ir
I100C	Clear Cord	A + Ir
I100CZ	Clear Corteza	A + Ir
I100G	Clear Granite	A + Ir
I100GG	Clear Crystal Ice "Sparkolite"	A + Ir
I100H	Clear Hammered Cathedral	A + Ir
I100K	Clear Krinkle	A + Ir
I100QR	Clear Quarter-Reed Cathedral	A + Ir
I100R	Clear Ripple	D + Ir
I100RR	Clear Rough Rolled Cathedral	A + Ir
I100RW	Clear Rain Water	A + Ir
I100SDY	Clear Seedy Cathedral	AA + Ir
I100SN	Clear Satin Cathedral	A + Ir
I100V	Clear Vecchio	A + Ir
I100W	Clear Waterglass	D + Ir
I110.2SF	Pale Amber SYS96 Cathedral	BF + Hf
I125SF	Dark Green SYS96 Cathedral	CF + Hf
I125W	Dark Green Waterglass	D + Ir
I130.8SF	Pale Blue SYS96 Cathedral	BF + Hf
I136SF	Dark Blue SYS96 Cathedral	CF + Hf
I151SF	Cherry Red SYS96 Cathedral	HF + Hf
I200.91W	White Waterglass	G + Ir
I200S	White Solid Opal	C + Ir
I305S	White/Clear Opal	AA + Ir
I307S	Clear White Opal	AA + Ir
I309S	Clear White, Wispy	A + Ir
I317.02S	Pale Amber/White, Transl, Opal	A + Ir
I329.6S	Dark Emerald Green/Wht, Wispy, Opal	B + Ir
I337.1S	Pale Blue/White, Translucent, Opal	A + Ir
I339.6S	Dark Cobalt Blue/White, Wispy, Opal	B + Ir
I347.1S	Pale Purple/White, Transl, Opal	A + Ir
I349.6S	Dark Purple/White, Wispy, Opal	A + Ir
I359.1S	Cherry Red/White, Wispy, Opal	H + Ir
I387.2S	Grey/White, Translucent, Opal	A + Ir
I395.1S	White/Pink, Opal	K + Ir
I400BR	Black/Clear Baroque	G + Ir
I518.1SF	Bronze Solid SYS96 Cathedral	BF + Hf
I543.2SF	Grape Solid SYS96 Cathedral	BF + Hf
I609.8S	Clear/White/Pink, Wispy	L + Ir
I823.92S	Teal Green/White, Wispy, Opal	A + Ir
I833.91S	Sky Blue/White, Wispy, Opal	A + Ir
I843.92S	Light Grape/White, Wispy, Opal	A + Ir
I891.61S	White/Pink Champagne, Opal	A + Ir



Founded in Paden City, West Virginia, Paul Wissmach Glass originally manufactured raised glass letters (for elevators), wire glass and tubing. Wissmach boasts an impressive line including the very popular English Muffle, and Corella classic textures. Although new glasses are continually introduced, many of the batches used by Wissmach at the turn of the century are still used today. Wissmach currently offers more than 3,000 colours, tints and patterns and on an average day, eight to ten colours are made in fourteen furnaces. Now producing over 13,000 square feet of glass daily, Wissmach continues to develop new colours and textures to meet its' customers demands, the latest being its centennial MYSTIC glass in twenty colours, streaky and wispy, plus clear. Hollander Glass stocks over 200 of these colours and if we have missed something of major importance to you, please let us know.

TEXTURE CODES

C	Cube	G	Granite
CC	Corella Classic	H	Hammered
DR	Double Rolled Cathedral	IR	Iridescent
DW	Dew Drop	M	Moss
F	Flemish	R	Ripple
FC	Figure-C	RR	Stream-X
FL	Florentine	S	Seedy Cathedral

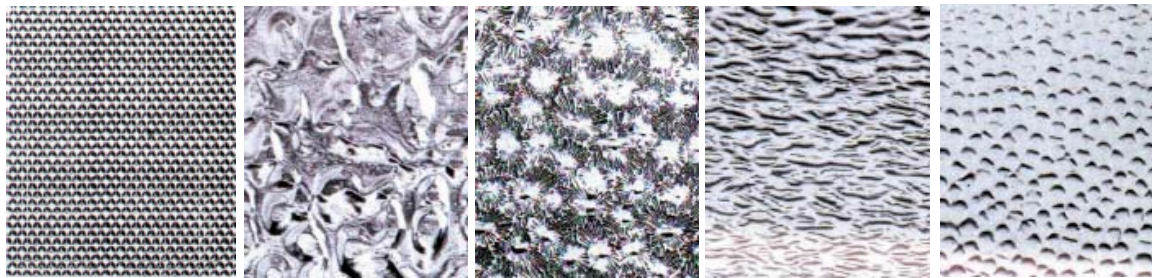
DENSITY CODES

D	Opalescent	LL	Streaky
DD	Solid Opalescent	O	Wispy (prefix)

TEXTURE IMAGES

Wissmach glass with little or no textures are not shown but are listed as follows:

CC - Corella Classic; D - Opalescent; DD - Solid Opalescent; DR - Double-rolled cathedral; DW - Dew Drop; FIGC - large blobby texture, W - Wispy.



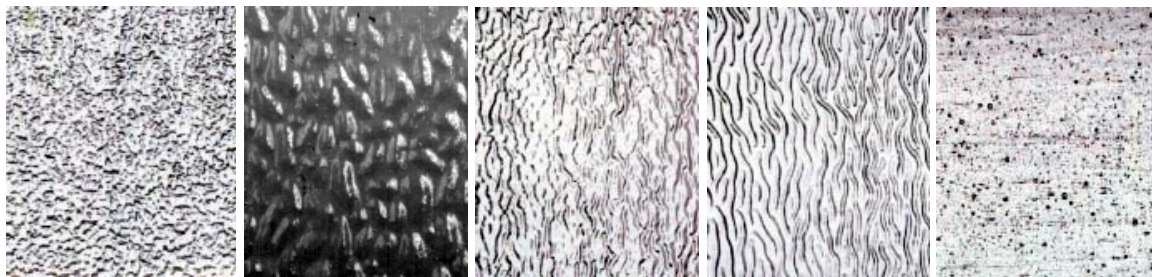
Cube (C)

Flemish (F)

Florentine (FL)

Granite (G)

Hammered (H)



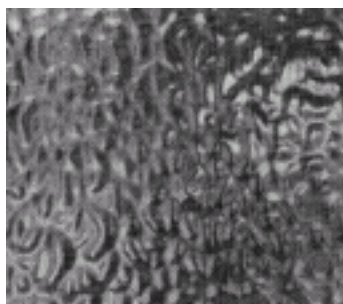
Moss (M)

Muffle (EM)

Ripple (R)

Ripple Stream-X (RR)

Seedy (S)



English Muffle

English Muffle

“English Muffle” is the name given to a type of cathedral glass that was very popular in Victorian and Edwardian work. This glass has now been reproduced and is much sought after for restoration and recreation of “old” windows. The glass has a high polish and a distinctive yet subtle pattern, and cuts easily. For Victorian design ideas, see the “English Muffle Book of Designs” shown on the following page.

Wissmach Glass Facts (Includes English Muffle)

The prefix for Paul Wissmach is “PW”. Please add to codes when ordering. For English Muffle, please add the prefix “EM”.

Sheet & Case Sizes: (except Mottled & Gold Pink, EM 4913)

- Approximately 32” x 42” =9.4 sq.ft. per sheet
- Full Case contains about 42 sheets or 410 sq.ft.

Sheet & Case Sizes: (Mottled & Gold Pink)

- Mottled - approx 28” x 34” =6.8 sq.ft. per sheet
- Gold Pink - approx 17” x 18”. Sold “by the pound”

Sheet & Case Sizes: (EM 4913 - “Cranberry Pink”)

- Sheet sizes are about 17” x 18”
- Sheet weight is approximately 3.8 lb. each



English Muffle

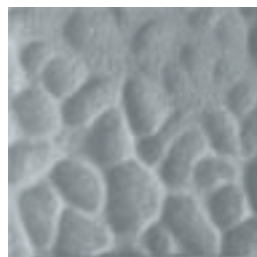
Stock No.	Description	Price Code
EM 4134	Spring Lavender (134)	EMA
EM 4218	Salvation Jane (218) <i>violet</i>	EMA
EM 4568	Champagne Pink (568)	EMB
EM 4901	Clear (01)	EMA
EM 4902	Dusky Rose (50)	EMB
EM 4903	Cornwall Green (322) <i>pale blue/green</i>	EMA
EM 4904	Windsor Blue (235) <i>country blue</i>	EMA
EM 4905	Scottish Heather (418) <i>lilac</i>	EMA
EM 4906	Flaxen Tint (195) <i>yellow green</i>	EMA
EM 4907	Sage Green (287)	EMA
EM 4908	Aqua Mist (65) <i>aqua</i>	EMA
EM 4909	Princess Blue (x118) <i>pale blue</i>	EMA
EM 4910	Apricot Beige (276) <i>flesh tone</i>	EMB
EM 4911	London Fog (555) <i>light grey</i>	EMB
EM 4912	Manchester Red (16) <i>med copper red</i>	EMC
EM 4913	Cranberry Pink (Per Lb) (6) <i>med gold pink</i>	EMD
EM 4914	Sussex Green (318) <i>medium olive</i>	EMA
EM 4915	Salem Green (161) <i>light olive</i>	EMA
EM 4916	Noble Brass (47) <i>medium amber</i>	EMA
EM 4917	Regency Gold (34) <i>light amber</i>	EMA
EM 4921	Rose Red Streaky (x16) <i>light copper red</i>	EMC
EM 4922	Midnight Blue (378)	EMA
EM 4923	Seleniun Red Eng (18)	EME
EM 4924	Aubergine Silk (241) <i>dark purple</i>	EMA
EM 4925	Emerald Isle (343) <i>green</i>	EMA
EM 4926	Majesty Blue (220) <i>cobalt blue</i>	EMA
EM 4927	Coronation Gold (310) <i>dark amber</i>	EMA
EM 4928	Antique Veil (0001) <i>palest amber</i>	EMA

English Muffle Factory Sample Set

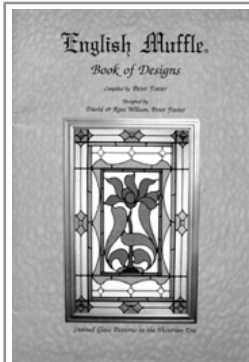
EM SAMPLES	Factory Sample Set
------------	--------------------



EM 4909



EM 4911



English Muffle Book of Designs By Peter Foster BK 4900

This book contains numerous stained glass patterns from the Victorian era, all specially suited for English Muffle glass. It's more than 40 designs include center door panels, sidelights, top lights, and fan lights. Also contains many color photographs of completed projects.

WISSMACH

Stock No.	Description	Price Code
Clear Cathedrals		
01CC	Corella Classic	C
01DR	Double Rolled	A
01DW	Dew Drop	A
01F	Flemish	A
01FC	Figure-C	A
01FL	Florentine	A
01G	Granite	A
01H	Hammered	A
01M	Moss	A
01R	Ripple	A
01RR	Stream-X	C
01S	Seedy	A
White Opals		
051	Wispy White	A+Y
51DD	Pot White (Dense White)	D
51DDXXM	White Opal	AA
51DG	Granite	D
51LL	Translucent Pot White	D
51LLGX	Translucent Pot White, Granite	D
Amber and Flesh Cathedrals		
0001CC	Very Pale Amber Corella Classic	C
0001DR	Very Pale Amber Double Rolled	A
0001S	Very Pale Amber Seedy	A
34DR	Medium Amber Double Rolled	A
34M	Medium Amber Moss	A
34R	Medium Amber Ripple	A
46CC	Medium Amber Corella Classic	C
46DR	Medium Amber Double Rolled	A
46H	Medium Amber Hammered	A
46M	Medium Amber Moss	A
46S	Amber Seedy	A
48CC	Medium-Dark Amber Corella	C
49F	Dark Amber Flemish	A
49G	Dark Amber Granite	A
276CC	Medium Peach/Bronze Corella Classic	G
276S	Medium Peach/Bronze Seedy	D
310CC	Dark Amber Corella Classic	C
310DR	Medium Amber Double Rolled	A
310G	Granite Amber Granite	A
310R	Medium Amber Ripple	A
311A	Dark Amber Brown	A
Amber Opals		
58D	Medium Amber	AA
58DG	Medium Amber, Granite	AA
145DGSP	Dark Amber, Granite	B
145DSP	Dark Amber	B
214DD	Beige Solid, Medium Amber	E
325D	Light Amber	AA
O58	Medium Amber (Wispy)	A+Y

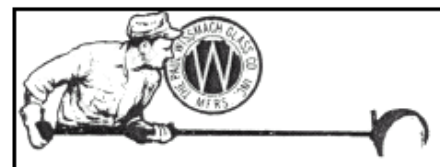


Stock No.	Description	Price Code
Green Cathedrals		
40CXDR	Light Olive Green Double Rolled	A
40CXR	Light Olive Green Ripple	A
287S	Medium Army Grey-Green Seedy	A
309DR	Light Yellow Green Double Rolled	A
309S	Light Yellow Green Seedy	A
316S	Medium Green Seedy	A
319DR	Dark Yellow Green Double Rolled	A
319S	Dark Yellow Green Seedy	A
320CC*	Dark Green Corella Classic	C
320R	Dark Green Ripple	A
343CC	Medium Green Corella Classic	C
343DR	Medium Green Double Rolled	A
346DR	Dark Yellow Green Double Rolled	A
346M	Dark Yellow Green Moss	A
1146S	Medium Yellow Green Seedy	A
Green Opals		
55D	"Avocado" Amber/Green	B
55DG	"Avocado" Granite Amber/Green	B
O101	Dark Green Wispy	B+ Y
Brown Cathedrals and Opals		
199	"Mahogany" Medium Amber	B
199G	"Mahogany" Dark Amber, Granite	B
199R	"Mahogany" Brown, Ripple	B
502D	Opal Swirled w/ Medium Grey/Brown	B
Blue Cathedrals		
118RR	Blue Grey Stream-X	C
158CC	Medium Copper Blue Corella Classic	C
158S	Medium Copper Blue Seedy	A
190CC	Deep Aqua Corella Classic	C
220CC	Cobalt Blue Corella Classic	C
300R	Medium Sky Blue Ripple	A
300S	Medium Sky Blue Seedy	A
341F	Medium Blue Flemish	A
341M	Medium Blue Moss	A
342DR	Dark Copper Blue Blue	A
364CC	Dark Teal Blue Corella Classic	C
378CC	Midnight Blue Corella Classic	C
378DR	Midnight Blue	A
Blue Opals		
87D	Sky Blue	B
118D*	Cobalt Blue	B
250D	Aqua Green	B
563D	Steel Blue	B
O118	Cobalt Blue Wispy	B+ Y
O563	Steel Blue Wispy	B+ Y
O87	Sky Blue Wispy	B+ Y

*Remaining stock only.

Stock No.	Description	Price Code
Amethyst and Violet Cathedrals and Opals		
134CC	Medium Purple Corella Classic	C
2180R*	Light Violet Ripple Opal	D
218CC	Light Violet Corella Classic	C
241CC	Dark Purple Corella Classic	C
241DR*	Deep Amethyst Cathedral	A
311VCC	Medium Violet Corella Classic	C
311VDR	Medium Violet Cath. Double Rolled	A
418CC*	Mauve Corella Classic	C
418M	Medium Mauve Moss Cathedral	A
O67	Dark Purple Opal Wispy	B+ Y
Grey and Black Opals		
500	Black Glass	A
Yellow Cathedrals and Opals		
2D	Bright Yellow Opal	J
31DR	Selenium Yellow Cathedral	I
O2	Yellow Opal Wispy	G+ Y
Red and Orange Cathedrals and Opals		
18CC	Corella Classic Red Cathedral	I
18DR	Selenium Red Cathedral	I
18DW*	Red Dew Drop Cathedral	I
18F	Red "Flemish" Cathedral	I
18G	Granite Red Cathedral	I
18H	Hammered Red Cathedral	I
18M	Red Cathedral - Moss	I
18R	Red Ripple Cathedral	I
27D	Orange/Peach Opal	G
43L	Burgundy Red W/ White Opal	G
O27	Wispy Orange/Peach Opal	G+ Y
Champagne Cathedrals and Opals		
568CC	Champagne Corella Classic	G
569D	Champagne Pink In White Opal	E
O522*	Champagne Wispy Opal	E+ Y
Pink Cathedrals and Opals		
7D	Gold Pink Opal	J
7DG	Gold Pink Opal, Granite	J
O36	Wispy Flamingo Pink Opal	J+ Y
O7	Wispy Gold Pink Opal	J+ Y
O7R*	Wispy Gold Pink Opal Ripple	J+ Y
P51DD	Pink Tinted Pot Opal	E

*Remaining stock only.



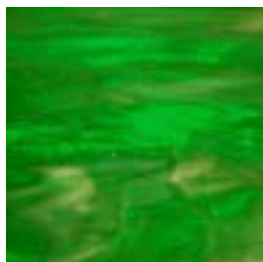


Stock No.	Description	Price Code
Mixed Colour Opalescents		
35D	Gold Pink/Silver/Light Blue	J
78D*	Green/White/Beige	B
178L	Medium Amber/Sky Blue	B
197D	Blue Green	B
245D	Amber & Green	B
264D	Medium Purple/Yel/Grn/Sky Blue	D
O14	Wispy Gold Pink Silver	J+ Y
O197	Wispy Blue-Green	B+ Y
O264	Wispy Turq/Purp/Grn/White	D+ Y
O35	Wispy Gold Pink Mixed	J+ Y
O437	Wispy Blue/Purple/Amber	D+ Y
O59	Wispy Dk Brn & Green	B+ Y
O85	Wispy Blue/Rose	B+ Y
O94*	Wispy Mauve & Amber	B+ Y
Streaky Cathedrals		
7LL	Pink In Clear	J
11	Selenium Red/Amber Streaky	G
11G	Red/Amber Granite	G
14LL*	Gold Pink Silver Streaky	J
41LL*	Burgundy Red Streaky	G
44LL	Burgundy Red Streaky	G
97G	Blue/Purple Streaky Granite	B
100-SP	Streaky Green & Opal	B
101LL	Green In Clear Streaky	B
118LL	Cobalt & Clear Streaky	B
118LLR	Dark Blue Stky Ripple	B
197LL	Light Blue & Green	B
197LLR	Light Blue/Green Ripple	B
197NLLG	Light Blue/Green Granite	D
238NLLG	Rose/Purple/Green Streaky Granite	D
257LL	Purple/Blue/Clear Streaky	D
257LLG	Purple/Blue/Amber Granite	D
Iridescent		
01DRIR*	Clear Double Rolled	A+ X
01FLIR	Clear Florentine	A+ X
01RIR	Ripple Clear	A+ X
51DDXXMIR	White Opal	AA+ X
51LLIR	Translucent Pot White	D+ X
58DIR	Beige Opal	AA+ X
188LIR	Grey-Blue & White Opal	B+ X
500IR	Black Opal	A+ X
O101IR*	Wispy Green Opal	B+ Z
O51IR	Wispy White Opal	A+ Z
O58IR	Wispy Beige Opal	A+ Z
O87IR	Wispy Sky Blue Opal	B+ Z

*Remaining stock only.

Stock No.	Description	Price Code
Victorian Mottled Glass		
VM2	Yellow	G
VM7	Gold Pink/White	J
VM51DDXXM	White Opal	AA
VM58	Beige Opal	AA
VM101*	Dark Green Opal	B
VM112	Dark Green/Amber/White	B
VM118	Dark Blue/Wht Opal	B
VM197	Blue & Green	B
VM257	Blue/Purple/White	D
VM563	Steel Blue/White	B

*Remaining stock only.



100-SP
Streaky Green & Opal



264D
Medium Purple/Yellow/
Green and Sky Blue



14LL
Gold Pink/Silver/Streaky



197LL
Light Blue & Green



Mystic Glass originally made its debut on July 1, 2004, to coincide with the company's 100th anniversary. As you can see from the list below, a wide range of colours are available.

Stock No.	Description	Price Code
Mystic Glass - Cathedral		
0001MYS	Pale Amber	CMY
01MYS	Clear	CMY
25MYS	Aqua Blue/Green	CMY
40CXMYS	Light Olive Green	CMY
49MYS*	Dark Amber	CMY
118MYS	Light Blue Grey	CMY
158MYS	Medium Copper Blue	CMY
195MYS	Army Yellow Green	CMY
220MYS	Cobalt Blue	CMY
241MYS	Dark Purple	CMY
286MYS	Medium Yellow Green	CMY
287MYS	Medium Olive Green (Army)	CMY
309MYS	Light Yellow Green	CMY
311VMYS	Medium Violet	CMY
322MYS	Pale Blue/Green	CMY
341MYS	Medium Blue	CMY
34MYS	Medium Amber	CMY
378MYS	Midnight Blue	CMY
555MYS	Light Grey	DMY
Mystic Glass - Streaky		
701LLM	Medium Purple w/ Dark Purple	AMY
702LLM	Medium Green w/ Dark Blue	AMY
703LLM	Blue w/ Purple	AMY
704LLM	Medium Green w/Brown	AMY
705LLM	Violet w/Medium Amber	AMY
706LLM	Light Amber w/ Brown	AMY
707LLM	Light Blue w/ Dark Blue	AMY
708LLM	Light Green w/ Dark Green	AMY
709LLM	Green w/ Amber Streaks	AMY
710LLM	Burgandy w/ Dark Blue	BMV
Mystic Glass - Wispy (Note PCA2 = PCAZ)		
O702M*	Medium Grn w/ Dk Blue & White	EMY
O703M	Blue w/ Purple & White	EMY
O704M	Medium Green w/ Brown & White	EMY
O705M	Violet w/ Medium Amber & White	EMY
O706M	Lt Amber w/ Brown & White Opal	EMY
O707M	Lt Blue w/ Dk Blue & White	EMY
O708M	Lt Green w/ Dk Green & White	EMY
O709M	Green w/ Amber & White Opal	EMY
O710M	Burgandy w/ Dk Blue & White	FMY

*Remaining stock only.

Wissmach Factory Sample Set

PW SAMPLES | Factory Sample Set

Mystic Sample Set

PW SAMMYSTIC | Mystic Sample Set

“VALUE-PAKS”

Wissmach takes its odds 'n ends, cuts them down to 12" x 14" pieces, and packs 175 sq. ft. per case. These are good deals and we wish we always had them in stock. Unfortunately, they are hard to get so we cannot guarantee availability. Please inquire.

PW VP | Wissmach Value Pak

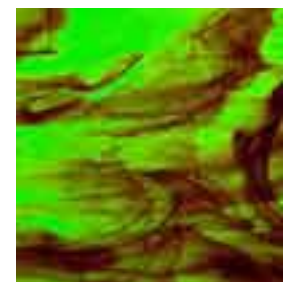
“WEE PAK”

Wissmach same odds and ends, cut down to an even smaller 8" x 10" - 150 pieces or 83 sq. ft. per case. Typical case contains 20 or so different glass types. Again, stock of these is variable, so we cannot guarantee availability. Please inquire.

PW WEE | Wissmach Wee Pak



O705M
Violet with Medium Amber & White



704LLM
Medium Green with Brown



**KOKOMO
OPALESCENT
GLASS**
OPALESCENT & CATHEDRAL

Kokomo was founded in 1888. Recognized as the oldest creator of magnificent colour in art glass in the United States, the company is dedicated to providing the artisan and craftsman with the finest in glass products available. Kokomo excels in colour selections and cutability. The palette of Kokomo colours seems to be endless, yet they add on a few contemporary colours every year. Of special interest are their Tight Ripple Texture and Granite Catspaw. Some colour combinations are unique to Kokomo and have a mysterious quality.

Among its customers in the late 1800's was the Louis C. Tiffany Glass Company of New York, and many of the colours that were furnished to Tiffany are available today.

SUFFIX CODES

SCP	Smooth Catspaw	LL	Clear Colours, Streaky
GCP	Granite Catspaw	MD	Medium Dense
D	Solid Opalescent	ML	Wispy w/ a little more white
G	Granite	SB	Starburst
H	Hammered	TRIP	Tight Ripple
KDR	Double Rolled Cathedral	WAV	Rough Chiselled (Wavolite)
L	Wispy	V	Vertigo

Kokomo Glass Facts

The prefix for Kokomo is "KO". Please add to codes when ordering.

Sheet & Case Sizes:

- Approximately 32" x 32" = 7.1 sq.ft. per sheet
- Full Case contains about 36 sheets or 255 sq.ft.

Stock No.	Description	Price Code
Clear Cathedrals		
33	Smooth	A
33SB	Starburst	AS
33SBIR	Starburst, Iridescent	AS + Ir
33TRIP	Tight Ripple	A + Rip
33TRIPR	Tight Ripple, Iridescent	AZ
33V	Vertigo	AV
33VIR	Vertigo, Iridescent	AVI
33WAV	Wavolite	A
Amber and Orange Opals		
11	Medium Amber	A
11G	Medium Amber Granite	A
23D	Carmel Opalume	A
145MD*	Dark Amber	A
145MLG	Dark Amber Granite	A
172	Dk Amber/Medium Amber Streaky	A
1145	Honey, Amber Mix	A
Brown, Grey and White Opals		
45D	Cream Opalume	A
61	Brown Opal	A
61LL	Brown Clear Streaky	A
61SPL	More Brown/White Opal	A
61SPLX	Brown, Light Amber Opal	B
118SPL*	Clear, White Streaky	A
160DW	Slate Opalume	A
1075	Green Grey	A
Champagne Cathedrals		
880G	Pale Champagne Pink Granite	C
881SPL	Champ Cath w/Flamingo Opal Strks	E

*Remaining stock only.

Stock No.	Description	Price Code
Green Cathedrals and Streakies		
163LL	Two Greens, Clear Streaky	B
163LLG	2 Greens, Streaky, Granite	B
509G	Light Blue Green, Granite	A
654	Teal Green	A
657DSPL	Hunter Green Opalume	A
659SB	Dark Christmas Green Starburst	AS
667G	Pale Green, Granite	A
667IR*	Pale Green, Iridescent	A + Ir
701A	Blue Grey, Seedy	A
Green Opals		
12	Green, Blue	C
25	Turquoise Opalume, Green	A
48	Christmas Green	A
86	Dark Green	A
98NL	Darker Green, Light Amber, Wispy	A
122	Green Opalume, Green	A
163	Dark & Lime Greens	B
163G	Dark & Lime Greens, Granite	B
654ML	Translucent Teal Opalume	A
657D	Hunter Green Opalume	A
Blue Cathedrals and Streakies		
4CLL	Cobalt Blue, Clear Streaky	C
42LL	Steel Blue, Clear Streaky	A
123LL	Two Blues Streaky	C
604H	Dark Turquoise Blue, Hammered	C
605	Medium Copper, Cobalt Blue	C
610	Medium Turquoise Blue	C
701A	Blue Grey, Seedy	A
806G	Medium Dark Purple, Granite	A
855G	Dark Violet (Bluest), Granite	C
855H	Dark Violet (Bluest), Hammered	C

*Remaining stock only.



Stock No.	Description	Price Code
Blue Opals		
4SPL	Royal Blue, Clear	C
14	Blue, Tan	C
14G*	Blue, Tan, Granite	C
14SPL	Light Blue, Light Amber	C
31D	Light Blue Opalume	A
37	Sky Blue	A
42	Steel Blue	A
123	Medium Blue Opalume, Royal Blue	C
125	Turquoise Blue	A
622D	Dark Blue Opalume	C
Purple Cathedrals and Opals		
26	Black Purple	A
192	Violet	C
627D	Blue Violet Opalume	A
PB	Purple Brown Cathedral	A
PBDSPLKDR*	Purple Brown w/Light Texture	A
Red Cathedrals and Opals		
41	Cerise Ruby	D
41SPL	Ruby Red, Clear, Streaky	D
41SB	Cerise Ruby, Starburst	DS
214SPL	More Red, Opal	D
225LL	Cerise Ruby	D
225D	Red Opalume	D
Multi-Coloured Streaky Cathedrals and Opals		
5NLL	Plum Purple, Light Amber, Blue, Streaky	C
5NLLG	Plum Purple, Light Amber, Blue, Granite	C
12LL	Green, Blue, Clear Streaky	C
13LLG	Med. Amber, Green, Clear Streaky, Granite	B
26LL	Black, Purple, Clear Streaky	A
28LLG	Amber, Green, Clear Streaky, Granite	B
29LL	Lt Purple, Med Amber, Green, Streaky	B
30LL	Turquoise Blue, Light Amber, Clear Streaky	B
47LL	Purple, Yellow, Clear Streaky	B
49LLG	Brown, Green, Yellow Streaky, Granite	B
59LL	Brown, Green, Clear Streaky	B
59LLG	Brown, Green, Clear Streaky, Granite	B
59LKDR	Green, Brown, White, Clear Textured	B
59PLL	Purple Brown, Green, Clear Streaky	B
64LL	Blue, Black Purple, Clear Streaky	C
64LLG	Blue, Black Purple, Clear Streaky, Granite	C
70LL	Green, Purple, Blue Streaky	B
74	Red, Green Streaky	D
91N	Red & Purple Streaky	D
94	Black, Purple, Cobalt Blue Green, Opal	C
94LL	Black Purple, Blue, Green, Clear Streaky	C
103LL	Green, Blue, Purple Streaky	C

*Remaining stock only.

Stock No.	Description	Price Code
Multi-Coloured Streaky Cathedrals and Opals Cont'd...		
104	Amber, Cerise Ruby Streaky	D
104G	Amber, Cerise Ruby Streaky, Granite	D
106NLL	Green, Cerise Ruby, Clear Streaky	D
106NLLG	Green, Cerise Ruby, Clear Str'ky, Granite	D
142LL	Blue, Green, Clear Streaky	C
142LLSB	Blue, Green, Cl'r Streaky, Starburst	CS
142LLSPLV	Blue, Green, Cl'r Streaky, Vertigo	CV
164LL	Forest Green, Dark Amber, Cl'r Streaky	B
165	Green, Amber Streaky	A
222XLLG	Amber, Blue, Purple, Clr Streaky, Granite	C
246NLL	Amber, Blue, Purple, Green, Cl'r, Streaky	C
265	Amber, Blue, Purple, Green Streaky	C
266LL	Amber, Green, Blue, Purple, Cl'r Streaky	C
266LLG	Amb, Grn, Blue, Purp, Clr Str'ky, Granite	C
Multi-Coloured Opals with Pink		
4SPLP	Royal Blue, Clear, Pink	E
14SPLP	Blue, Pink	E
37P	Sky Blue, Pink	E
86P	Dark Green, Pink	E
Other Multi-Coloured Opals		
13	Medium Amber, Lime Green	B
35MD*	Light Purple Opalume, Light Amber	A
49	Carmel Opalume, Lime Green, Brown	B
59	Brown, Green	B
70	Med Blue Opalume, Green, Dark Purple	B
70G*	Med Blue Opal, Grn, Dk Purple, Granite	B
94	Black Purple, Cobalt Blue, Green	C
111	Ruby Red, Lime Green, Blue	D
111G	Ruby Red, Lime Green, Blue Granite	D
113	Dense Olive Green, Blue, Lime Green	B
113G	Dense Olive Grn, Blue, Lime Grn, Gran't	B
140	Light Amber, Lavender Purple	B
142	Blue, Green	C
142G	Blue, Green, Granite	C
203SP	Green, Brown, Purple	C
205	Mint Green, Light Amber	B
222X	Sky Blue, Purple, Light Amber	C
246	Amber, Blue, Purple, Green	C
249	Blue, Purple	C
263	Amber, Blue, Purple	C
266	Amber, Green, Blue, Purple	C
270	Sky Blue, Light Amber	B
455	Royal Blue, Brown Wispy	C
469	Light Blue Opal, Violet Cath, Skim Milk	C
470	Cobalt Blue Opal, Grn Cath, Skim Milk	C
629SPLX*	Wispy Pale Blue, Flamingo	E

*Remaining stock only.



Stock No.	Description	Price Code
Ripple Cathedrals		
142LLRIP	Blue, Green, Clear Streaky, Ripple	C + Rip
225LRIP*	Cerise Ruby, Tight Ripple	D + Rip
33TRIP	Clear, Tight Ripple	A + Rip
628TRIP	Light Blue, Tight Ripple	A + Rip
637TRIP	Medium Blue, Green, Tight Ripple	A + Rip
654TRIP	Teal, Tight Ripple	A + Rip
789TRIP	Grey, Tight Ripple	A + Rip
865TRIP	Violet, Tight Ripple	A + Rip
880TRIP	Champagne, Tight Ripple	C + Rip
Iridescent Tight Ripple Cathedrals		
33TRIPRIP	Clear	A + IrRip
225LLTRIPRIP	Cerise Ruby, Streaky	D + IrRip
810TRIPRIP*	Light Purple	A + IrRip
880TRIPRIP*	Pale Champagne Pink	C + IrRip
Tight Ripple Streakies and Opals		
1LLTRIP	Translucent White, Streaky	A + Rip
1LLTRIPRIP*	Translucent White, Streaky, Iridescent	A + IrRip
52LTRIP	Pink Opal, Wispy	E + Rip
52LTRIPRIP*	Pink Opal, Wispy, Iridescent	E + IrRip
Granite Catspaw		
11GCP	Medium Amber, Opal	A + GCP
13PGCP*	Medium Amber, Lime Green, Opal	E + GCP
52GCP	Pink, Opal	E + GCP
142GCP*	Blue, Green	C + GCP
145GCP	Dark Amber, Opal	A + GCP
Smooth Catspaw		
11SCP*	Medium Amber, Opal	A + SCP
125SCP*	Turquoise Blue, Opal	A + SCP

*Remaining stock only.

Assorted Kokomo Posters

KO POSTER	Assorted Kokomo Posters
-----------	-------------------------

Posters shown below from left to right: Keepers by Peter McGrain, and Autumn by Bogenrief Studios.



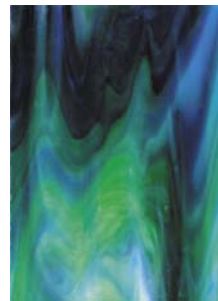
Kokomo Sample Set

KO SAMPLES	Kokomo Full Sample Set
------------	------------------------

“PONY CASE”

100 sq.ft. of assorted colours. Pieces approx. 16” x 18”.

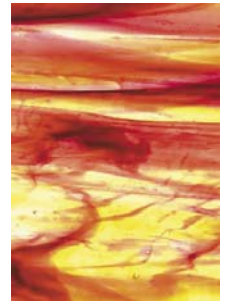
KO PONY	Pony Case, 100 Sq Ft/Case
---------	---------------------------



94 - Emerald Green, Opal



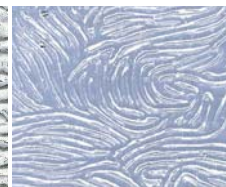
469 - Light Blue Opal, Violet Cathedral, Skim Milk



47LL - Purple, Yellow, Clear Streaky



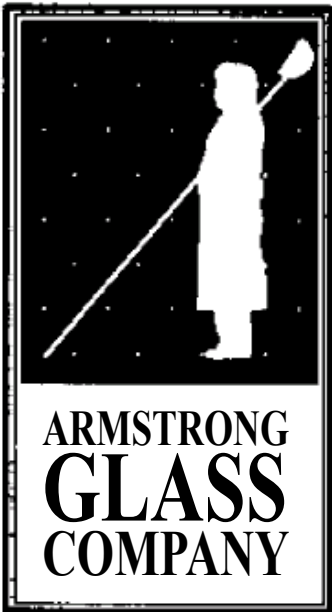
33TRIP - Tight Ripple



33V - Vertigo



33WAV - Wavolite



Founded in 1977, ARMSTRONG GLASS COMPANY has been under new ownership and management since April, 1991. The company has a worldwide distribution network and specializes in opalescent mixes and pinks. All the glass is hand mixed and then machine rolled creating unique sheets with vivid, bright colours. The colours are the same in each batch but the swirl, blend of colours, is different in every sheet. Instead of trying to reproduce colours and glass types that are already being manufactured by other glassmakers, those at Armstrong choose rather to investigate new areas of opalescent glassmaking and as a result, have produced a glass that distinguishes theirs from all others.

The newest Armstrong products are Cobblestone & Ripple. Cobblestone has a low profile texture reminiscent of many antique style glasses. Tailor made for those situations where completely opaque glass is unnecessary, Cobblestone has already become a favourite.

Armstrong Glass Facts

The prefix for Armstrong is "AMG". Please add to codes when ordering.

Sheet & Case Sizes:

- Sheet size has varied so we have 3 different sizes. An item may be:
 - 32" x 42" and 26" x 40" (old sizes) and
 - 32" x 36" (new size).

If size is critical for your application then please inquire at time of order.

- Full Case contains about 50 sheets (new cases).

Stock No.	Description	Price Code
White Opals and Ivory		
0018V	Clear/, Ivory Opal	B
18A	Almond Opal	C
1800G	Opal, Clear, Streaky, Granite	B
1800V	Clear, Ivory, Streaky	C
Graffiti <i>(Multi coloured melted frit on a clear or opal base. Very unique!)</i>		
4725	Graffiti-2; On Clear Base	E
4726	Graffiti-1; On Opal Base	E
Amber		
012*	Clear, Opal, Light Amber, Wispy	B
0124	Light Amber, White Streaky	B
58W	Opal, Amber, Streaky, Shadowglass	BW
121	Opal, Amber, Grey, Streaky	B
2355	Amber, Red Streaky	C
2418D	Dark Brown, Opal, Streaky	C
Green		
01325	Flint, Opal, Green, Black, Red	F
31SO	Mint Opal	C
33	Dark Green Cathedral	D
1233	Opal, Amber, Grey, Streaky	C
3049	Purple, Green, Clear, Blue	C
3318	Dark Green, Opal, Streaky	D
5013	Black, Clear, Opal, Green, Streaky	C

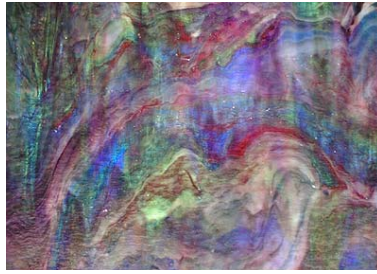
Stock No.	Description	Price Code
Aqua		
0144	Clear, Opal, Aqua, Streaky	B
44	Aqua Cathedral	C
44SO	Aqua Opal	C
341	Light Green, Light Blue, Opal, Streaky	C
346G	Aqua, Blue, Purple, Pink, Opal, Streaky, Granite	H
1480	Opal, Aqua, Orange, Clear, Wispy	C
4418	Aqua, Opal, Streaky	C
Blue		
0042	Clear, Cobalt Blue, Streaky	B
145	Opal, Cobalt Blue, Red, Streaky	C
403	Cobalt Blue, Clear, Green Streaky	C
431	Cobalt Blue Dark Green, Opal, Streaky	C
894	Blue, Grey, Orange, Purple, Clear, Opal, Wispy	F
1841	Opal, Light Blue, Wispy	C
4218	Cobalt Blue, Opal, Streaky	C
4233S*	Cobalt Blue, Dark Green, Streaky	D
4518	Royal Blue, Opal, Streaky	C
4618	Grey Blue, Streaky	C
Purple		
0194	Clear, Opal, Lavender, Wispy	D
90C*	Light Purple Cathedral, Cobblestone	C + c
Yellow		
017	Clear, Opal, Yellow, Streaky	D

Bold type indicates new glass since last printing.

*Remaining stock only.

Hollander Glass Canada Inc.

A - ART GLASS



346G - Aqua, Blue, Purple, Pink, Opal, Streaky, Granite



2601SO - Terra Cotta, Opal, Clear

Stock No.	Description	Price Code
Grey, Brown and Black		
10SO	Dark Grey Opal	C
11	Opal, Dark Grey, Wispy	B
26	Rust Cathedral	G
111	Opal, Medium Grey, Wispy	B
501	Black, Opal, Clear, Streaky	B
1025	Grey, Black, Streaky	B
1825	Opal, Black, Streaky	B
2523	Black, Amber, Streaky	C
2618	Rust, Opal, Streaky	G
Red		
51	Red, Opal, Streaky	F
125	Opal, Amber, Red, Streaky	E
135	Opal, Red, Green, Streaky	E
2601SO	Terra Cotta, Opal, Clear	F
2718	Paprika - Rust w/ Yellow Streaks	G
5017	Copper Red, Silver Yellow, Clear, Opal, Wispy	G
5610	Copper Red, Pink, Lt Champagne Opal, Wispy	H
5901	Copper Red, Purple, Clear, Opal, Wispy	F
Orange		
0176	Clear, Opal, Yellow, Flamingo, Streaky	F
81D	Dark Orange, Opal, Streaky	F
88SO	Orange Opal	G
189	Opal, Orange, Purple, Streaky	E
Pink		
106	Clear, Opal, Pink, Streaky	G
106SR	Iridescent Pink/White Wispy Opal Pink	G + Ir
1096	Opal/Blue/Pink/Clear/Purple Blue	G
1821*	Opal, Champagne, Streaky	D

*Remaining stock only.

Stock No.	Description	Price Code
Ripple		
44P	Aqua Cathedral	C + R
246P	Amber, Blue, Green, Pink, Streaky	H + R
394P	Blue, Green, Purple, Wispy	D + R
436P	Blue, Green, Pink, Opal, Streaky	H + R
Iridescent		
23SR	Light Amber, Opal, Wispy	B + Ir
33SR	Dark Green Cathedral	D + Ir
42SR	Cobalt Blue Cathedral	D + Ir

"SPOT LITES"

Contains at least 25 premixed different colours with no more than 3 of any particular glass type. Case contains 75 sheets total, each 12" x 12" for a total square footage of 75.

AMG SPOT	Armstrong Spot Lites
----------	----------------------

"PIX"

Half sheet mixed cases. Contains 25 sheets, 4 square feet in size, packed in a small wooden crate.

AMG PIX	Armstrong 1/2 sheet mixed cases
---------	---------------------------------

Armstrong Sample Set

AMG SAMPLES	Armstrong Sample Set (2 boxes)
-------------	--------------------------------



Bullseye glass was founded in 1974 by three young glass blowers. The company started from scratch with no flat glass production experience, their methods requiring trial and error. They originally used an old bulldozer to crush glass for the cullet base. Their ambitions have brought them a long way from those crude beginnings. Just as one product line was perfected and introduced, they began a new challenge. Using a single roller and steel table, they reproduced the unique effect of "Catspaw" glass. Employing techniques long abandoned by older companies, they went on to produce metallic iridescents and confetti glasses, hand-rolled ripples and exotic gold pinks. Whatever the product, their aim was the same: to produce a traditional art glass of unrivalled quality, by hand. They chose the name "BULLSEYE" to remind themselves of their target.

Bullseye could be credited with producing the first "tested compatible" product line. They have introduced a complete line of "Tested Compatible" products designed with just this purpose in mind, but please consider these wonderful colours for your cold glass palette, as well.

Bullseye Glass Facts

The prefix for Bullseye is "BU". Please add to codes when ordering.

Sheet & Case Sizes:

- Approx sheet size 19.5" x 34"; approx. thickness is 3mm (1/8").
- Approx. weight is 7 to 8 lb per sheet for regular Bullseye glass.
- Full cases contain 66 sheets totalling approx. 440 to 480 lbs.

Pricing:

- Bullseye is sold "By The Pound"

BULLSEYE GLASS NUMBERING SYSTEM

Stock No. Reference	Glass Type
Begin with a "0"	Solid Colour Opals
Begin with a "1"	Cathedrals
Begin with a "2" or "3"	2 and 3 Colour Opal Mixes
Begin with a "4"	Fracture-Streamers
Begin with a "6"	Ring Mottle Opals
End in "-00"	Single Rolled
End in "-12"	Single Rolled Fishscale Irid.
End in "-21"	Ripple
End in "-32"	Double Rolled Fishscale Irid.
End in "-30"	Double Rolled (smoother)
End in "-31"	Double Rolled Rainbow Irid.

90COE **FUSIBLE GLASS - See Section C**
Bullseye makes an artful array of fusible glass in 90COE; see Section C - Fusing for details.

BULLSEYE GLASS GLOSSARY OF TERMS

Single & Double-Rolled: Bullseye's single-rolled sheet glass is characterized by a slightly wavy and highly glossy surface. New rolling equipment has allowed Bullseye to offer an alternative variety of rolled glass - a double-rolled sheet which has a flatter and more matte surface.

Solid Colour Opalescents: Solid opals are characterized by the tightly mottled translucence known as "Catspaw". This sparkling transmission gives them a depth and vitality not found in common double-rolled machine opalescents.

Cathedrals: The subtle, hand-rolled texture of Bullseye's cathedral glasses make them a good choice where maximum light and minimum visibility are desired. Also available with iridescent finish.

Two & Three Colour Streakies: The opal "fire" characteristic of Bullseye's solid opals also earns its streaky glasses the designation of true "Art Glass". Due to the hand casting method of manufacture, colour variations within a single sheet may range from softly muted transitions in the tip to sharply defined colour interfaces in the tail. All streaky glasses are also offered as "Tested Compatible".

Fractures & Streamers On White: When viewed through the white opal base glass, the brightly coloured glass chips and stringers take on a misty and distant quality that makes them the perfect choice for representational background schemes or pastel abstracts.

Fractures & Streamers On Clear: Each sheet of fracture-streamer glass is its own collage of light and colour. Bullseye's fracture-streamers are characterized by their uniformity and good cutting quality.

Streamer On Clear: Festively cascading threads of glass in 1, 2, or 3 - colour combinations, Bullseye streamers are available in "Tested Compatible" and "Iridescent" varieties. Streamers are made from glasses which are softer than the base clear and will tend to stick to the shelf at temperatures where the clear is still fairly stiff.

Iridescents: In any single sheet of glass, Bullseye's matte iridescent finish typically ranges from a silver, through a gold, into shades of green, blue and magenta. Each sheet is unique and the colour ranges will vary from sheet to sheet.

Mardi Gras: A colourful sprinkling of glass frits & streamers on clear base, Mardi Gras glass evokes images of Carnival or ticker tape parades. Also known as collage glass.

EXAMPLES OF GLASS TERMS



Solid Colour

2-3 Colour Streakies

Fractures & Streamers

Streamers



Stock No.	Description	Price Code
Solid Colour Opals		
0013-30F	Opaque White	DF
0024-30F	Tomato Red	CF
0025-30F	Tangerine Orange	CF
0034-00	Light Peach Cream	C
0100-00	Black	C
0100-31F	Rainbow Iridescent Black	CFI
0100-32F	Black Fishscale Iridescent	CFS
0100-37F	Silver Iridescent On Black	CFI
0100-38F	Gold Iridescent On Black	CFI
0108-00	Powder Blue	B
0112-00	Mint Green	B
0113-00	White	B
0113-31F	White Iridescent Fusible	BFI
0114-00	Cobalt Blue	B
0116-00	Turquoise Blue	B
0120-00	Canary Yellow	C
0124-00	Red	C
0125-00	Orange	C
0126-00	Spring Green	C
0132-00	Driftwood Grey	B
0135-00*	Teal Green	B
0136-00	Deco Grey	B
0137-00	French Vanilla	B
0138-30F	Marzipan Striker	DF
0139-30F	Almond Striker	DF
0141-30F	Forest Green	BF
0142-30F	Neo-Lavender	EF
0143-00	Lacy White	B
0144-00	Teal Green	B
0145-00	Jade Green	B
0146-00	Steel Blue	B
0147-00	Deep Cobalt Blue	C
0164-00	Egyptian Blue	B
0203-30	Woodland Brown	C
0212-30*	Olive Green	B
0220-00	Sunflower Yellow	C
0224-30F	Deep Red	CF
0225-30F	Pimento Red	CF
0243-30F	Translucent White	CF
0301-00	Gold Pink	E
0303-00*	Dusty Lilac	C
0305-00*	Salmon Pink	E
0309-30F	Cinnabar Striker	DF
0310-30F	Umber Brown Striker	DF
0313-30F	Dense White	CF
0320-00	Marigold Yellow	C
0321-30F	Pumpkin Orange	CF
0334-30F	Gold Purple Striker	FF
Cathedrals		
1101-00F	Clear Single Rolled	AF
1101-25	Clear Irid. Herringbone Ripple	AHI

*Remaining stock only.

Stock No.	Description	Price Code
Cathedrals Cont'd...		
1101-30F	Clear Double Rolled	AF
1101-31F	Clear Iridescent Double Rolled	AFI
1101-38F	Clear W/Gold Iridescent Double Rolled	AFI
1101-43F	Clear Reed	AF
1101-60F	6mm Clear	AF
1105-30F	Deep Plum	BF
1105-31F	Iridescent Deep Plum	BFI
1107-30F	Light Green	BF
1108-30F	Marine Blue	BF
1108-31F	Iridescent Marine Blue	BFI
1109-30F	Dark Rose Brown	BF
1109-31F	Dark Rose Brown Iridescent	BFI
1112-12F	Green Iridescent Fishscale	BFS
1112-30F	Adventurine Green	BF
1112-31F	Iridescent Adventurine Green	BFI
1114-30F	Deep Royal Blue	BF
1114-31F	Iridescent Deep Royal Blue	BFI
1116-30F	Turquoise Blue	BF
1116-31F	Turquoise Iridescent	BFI
1116-45F	Turquoise Blue Accordion	BF
1118-30F	Midnight Blue	BF
1118-31F	Iridescent Midnight Blue	BFI
1119-30F	Sienna	CF
1119-31F	Iridescent Sienna	CFI
1120-30F	Canary Yellow	CF
1120-31F	Iridescent Canary Yellow	CFI
1122-30F	Rededral	CF
1122-31F	Iridescent Red	CFI
1125-30F	Bright Orange Double Rolled	CF
1125-31F	Iridescent Bright Orange	CFI
1126-30F	Chartreuse	CF
1126-31F	Iridescent Chartreuse	CFI
1128-30F	Royal Purple	BF
1128-31F	Iridescent Royal Purple	BFI
1129-30F	Charcoal Gray	BF
1129-31F	Iridescent Charcoal Grey	BFI
1137-30F	Medium Amber	BF
1137-31F	Iridescent Medium Amber	BFI
1141-30F	Olive Green	BF
1141-31F	Iridescent Olive Green	BFI
1145-30F	Kelly Green	BF
1145-31F	Iridescent Kelly Grn	BFI
1215-30F	Light Pink Striker	EF
1234-30F	Violet Striker	FF
1305-30F	Sunset Coral	FF
1305-31F	Iridescent Sunset Coral	FFI
1311-00	Cranberry Pink	F
1311-31F	Iridescent Cranberry	FFI
1320-30F	Marigold Yellow	CF
1320-31F	Iridescent Marigold Yellow	CFI
1321-30F	Carnelian	FF
1322-30F	Garnet Red	CF
1322-31F	Iridescent Garnet Red	CFI
1332-30F	Fuchsia	FF



Stock No.	Description	Price Code
Cathedrals Cont'd...		
1334-30F	Gold Purple	FF
1401-30F	Crystal Clear	BF
1405-30F	Light Plum	BF
1405-31F	Iridescent Light Plum	BFI
1406-30F	Steel Blue	BF
1408-30F	Light Aquamarine Blue	BF
1409-30F	Light Bronze	BF
1409-31F	Iridescent Light Bronze	BFI
1412-30F	Light Aventurine Green	BF
1414-30F	Light Sky Blue	BF
1414-31F	Iridescent Sky Blue	BFI
1417-30F	Emerald Green	BF
1417-31F	Iridescent Emerald Green	BFI
1419-30F	Tan	CF
1426-30F	Spring Green	CF
1426-31F	Iridescent Spring Green	CFI
1428-30F	Violet	BF
1428-31F	Light Violet Iridescent	BFI
1429-30F	Light Silver Grey	BF
1429-31F	Iridescent Light Silver Grey	BFI
1437-30F	Light Amber	BF
1437-31F	Iridescent Light Amber	BFI
1439-30F	Khaki	BF
1439-31F	Iridescent Khaki	BFI
1442-30F	Neo-Lavender Shift	EF
1442-31F	Iridescent Neo-Lavender Shift	EFI
1449-30F	Oregon Grey	BF
1820-30F	Pale Yellow Tint	DF
1821-30F	Erbium Pink Tint	FF
1823-30F*	Burnt Scarlet Tint Striker	FF
1824-30F	Ruby Red Tint Striker	FF
1826-30F	Green Tea Tint	CF
1827-30F	Light Amber Tint	CF
1829-30F	Grey Tint	CF
1831-30F	Ruby Pink Tint Striker	FF
1834-30F	Coral Orange Tint	DF
1837-30F	Medium Amber Tint	CF
1841-30F	Spruce Green Tint	BF
1842-30F	Light Neo-Lavender Shift Tint	EF
1859-30F	Rhubarb Pink/Green Shift Tint	FF
1864-30F	Grey Blue Tint	CF
1867-30F	Olive Smoke Tint	CF
2-Colour Opal Mixes		
2001-00F@	Green/White Wispy	BF
2020-30F	Clr/Sunflower Yellow Strky	BF
2024-30F	Clear/Red Streaky	BF
2026-30F	Clear/Green Streaky	BF
2037-30F	Clear/Vanilla Streaky	BF
2047-30F	Clear/Dk Blue Streaky	BF
2064-30F	Clear/Egyptian Blue Strky	BF
2100-00	Clear/Black Streaky	B
2105-00	Blue/Plum	B

Bold type indicates new glass since last printing.

@Available at select times only by the manufacturer.

*Remaining stock only.

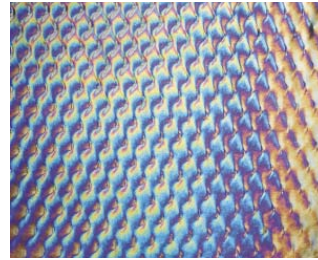
Stock No.	Description	Price Code
2-Colour Opal Mixes Cont'd...		
2107-00	White/Light Green	B
2108-00	Powder/Marine Blue	B
2109-00	White/Dark Brown	B
2112-00	Light/Dark Green	B
2121-00	Yellow/Forest Green	C
2123-00	Orange/White	C
2124-30F	Red/White	CF
2128-00	Purple/Blue	B
2129-00	Charcol Grey/White	B
2129-30F	Charcoal Grey/White	BF
2130-00	Clear And White	B
2137-30F	Med Amber/White	BF
2164-30	Caribbean Blue/White	C
2209-00	Dark Brown/White	B
2212-30	Olive/Forest Green	B
2229	White Charcoal Grey	B
2250-00	Soft Yellow/Deep Red	C
2302-00	Pink/White	C
2304-00	Lavender Blue/White	B
2305-00	Salmon Pink/White	C
2310-00	Cranberry Pink/White	E
2311-30	Pink Cathedral W/ White	I
3-Colour Opal Mixes		
3026-21	Cran/Blue/Green/White Ripple	KR
3026-30	Pnk/Blue/Green/White Double Rolled	K
3045-21	Azure/Jade/Neo Ripple	KR
3045-30	Azure/Jade/Neo Lavender	K
3123-00	Orange/Deep Green/ White	C
3126-21	Pink/Blue/Green Ripple	KR
3126-30	Pink/Royal Blue/Spring Green	K
3203-21	Brown/Black/Ivory Ripple	CR
3203-30	Woodland Brown/Ivory/Black	C
3212-30	Olive/Forest Greens/Brown	C
3328-00	Pink/Royal Purple/White	E
3334-30	Pink/Purple/White	F
3345-30	Cranberry Pink/Green/White	K
3346-21	Pink/Blue/White Ripple	KR
3346-30	Pink/Blue/White	K
3445-00	Neo/Purple/Green W/ Fractures	K
3501-00	Forest Green/Caramel/White	C
Fractures and Streamers		
<i>On A Translucent White Base</i>		
4010	Spring, Blue/Green/Aqua/Pink	E
4014	Spring Green, Deep Pink	E
<i>On A Clear Cathedral Base</i>		
4100*	Black Streamers (NOW ONLY 4100-00F)	D
4100-00F	Black Streamers	DF
4102-31F	Clear W/ Clear Fractures, Iridescent	EFI
4110-00F	Spring (410) <i>Blue, Green, Aqua, Pink</i>	EF
4111*	Autumn (411) <i>Orange, Yellow, Red</i>	E
4111-00F	Autumn (411) <i>Orange, Yellow, Red</i>	EF
4112-00F	Summer (412) <i>Green, Yellow</i>	EF

Hollander Glass Canada Inc.



Stock No.	Description	Price Code
Fractures and Streamers		
<i>On A Clear Cathedral Base Cont'd...</i>		
4113*	Winter(413) White w/ Clear Streamers	E
4113-00F	Winter(413) White w/ Clear Streamers	EF
4114-00F	Spring Green, Deep Pink	EF
4115*	2 Pinks/White Fract W/ Black Streamers	E
4115-00F	2 Pinks/White Fract W/Black Streamers	EF
4116-00F	Pnk/Grn/White Fract - Black Streamers	EF
4117-00F	Grn/White Fract. - Black Streamers	EF
4118-00F	White W/Black Streamers On Clear	EF
4119-00F	Blue/White Fract - Black Streamers	EF
4120*	Pink/Blue/Wht Frac - Black Streamers	E
4120-00F	Pink/Blue/Wht Frac - Black Streamers	EF
4121*	Pink/White Fract - Black Streamers	E
4121-00F	Pink/White Fract - Black Streamers	EF
4122*	Pnk/Plum/White Frac - Black Streamers	E
4122-00F	Pink/Plum/White Frac - Black Streamers	EF
4128-00F	Purp/Green/Blue Fract/W Pink Strmrs	EF
4171-10F	Black Clear Streamers Iridescent Clear	DFI
4200-00F	Black Frit/Streamers	EF
4202-31F	Iridescent Clear W/ Clear Frit	DFI
4211-00F	Red/Orange/Yellow Frit/Streamers	EF
4212-00F	Greens/Yellow Frit/Streamers	EF
4215-00F	2 Pinks Frit/Streamers	EF
4216-00F	Blues/Turquoise Frits/Streamers	EF
4217-00F	2 Greens Frits/Streamers	EF
4218-00F	Gray/Black Frits, Wht Streamers	EF
4219-00F	3 Blues Frits/Streamers	EF
4220-00F	2 Yellow Frits/Streamers	EF
4223-00F	Yellow/Blue/Red Frit Blue Streamers	EF
4224-00F	Red Frit/Streamers	EF
4227	Blossom Glass	I
4228	Holly Berry Glass	I
4229-00F	Gray/Bronze/Vanilla Frit/Streamers	EF
4234-00F	Cran/Purple Frit/Streamer	EF
4237-00F	Vanilla/White Frit/Streamers	EF
4242-00F	Neo/Purple/Blue Frit/Streamers	EF
4400-30F	Black Chopstix On Clear	DF
4402-31F	Iridescent Clear Chopstix	DFI
4424-30F	Red Chopstix	DF
4437-30F	White Chopstix On Clear	DF
4501	Pink Opal Mini-Confetti & Streamers	E
Ring Mottle Opals		
6247*	Medium Leaf/Emerald Green Mottle	D
6343*	White/Olive Green/Pink Mottle	E
6345*	Celery/Olive Green W Turquoise Strk	D
6446*	White/Turquoise/Blue Mott W/Grn/Pink	D

*Remaining stock only.



0100-32F
Black Fishscale
Iridescent.



Bullseye "Lamp Pack"

Contains approximately 50 pieces 9" x 12" - total 37.5 sq. ft. Includes solids and streaky opalescents with the characteristic Bullseye "catspaw" glow, mottles, fracture/streamers and iridescents. Gross weight 64 lbs, net weight approximately 52 lbs.

BU 8360 | Bullseye Lamp Pack



Bullseye "Panel Pack"

Contains approximately 50 pieces 9" x 12" of glass selected specifically for usage in panels. Total square footage about 37.5. Gross weight 64 lbs, net weight approximately 52 lbs.

BU 8361 | Bullseye Panel Pack



Bullseye Sample Set

BU SAMPLES | Bullseye Sample Set



The difference between mediocrity and magnificence lies in the selection of the glass. If you are building a Tiffany replica lamp, you'll want to check out Uroboros' beautiful selection of Tiffany representational glass. Or, if you have an architectural project in mind, Uroboros also boasts some exceptional fusible and architectural glass products. Next time the ordinary just won't do, try Uroboros!

As you can see, Uroboros Glass Studios boasts a very unique line. We have tried to describe each colour to its fullest in the space available. For more detail, a Uroboros Product list is available to those who are interested. A sample set is also worth purchasing. Some of the more unusual textures, such as the Fibroid and Herringbone would be valuable purchases for anyone who wants a full representation of glass on hand, available for themselves or their customers' perusal. The fracture/streamer listed here is worthy of examination, and don't forget the price listed is per square foot, not per pound. And finally, consider the fantastic array of fusible glass colours - which are great hot and cold!

Uroboros Glass Facts

The prefix for Uroboros is "UR". Please add to codes when ordering.

Sheet & Case Sizes:

- Sheet size is approx 24" x 32" - about 5 sq. ft./sheet
- Full Case usually contains about 30 sheets.

Pricing:

- Uroboros is priced by the square foot.

Stock No.	Description	Price Code
Ring Mottles		
00031	Pastel Pink & White	E
0005	White	E
0007	Blue Grey	E
0020	Ruby Red on White	E
0021	Ruby, Golden Yellow & Red on Wht	E
00288*	Dolphin Opal, Peacock Blue, Gold	H
0029*	Pink, Gold Purple	H
00294	Pink on Pink on Pink	K
0033	Honey Amber	E
00331	Honey Amber w/ Yellow & Sage	E
00361	Amber & Lemon Yellow on White	E
0040	Steel Blue & Sky Blue on White	F
0041*	Blue & Yellow on White	E
0043	Light Blue & Violet Blue	F
0044	Violet Blue & Lavender	E
00475*	Sea Grass, Lavender w/ Purp, Brwn	H
00485	Wht, Sage Grn w/ Forest Grn, Dk Brn	F
0050	Blue, Gold Pink, Spring & Emerald	H
00545	Blue, Plum w/ Emerald, Purple, Blue	E
0060	Yell, Orange on Wht w/ Spring, Dk Grn	E
0061	Orange, Red on Wht w/ Spring, Emer	E
00621	Red & Orange w/ Yellow & Green	E
00731	Avocado, Forest Green, Deep Amber	E
00752	Verdant Green w/ Lemon Yellow	F
00756	Blue Grn, Forest Grn, Midnight Grn	F
0076	Dark Green & Yellow on White	E
0078	Light Green w/ Spring Green	E
0079	Celery Green & Deep Forest Green	E
00911	Coffee, Mustard Yellow w/ Dk Brown	F
00913	Coffee, Emerald Green & Cream	E
00916	Dolphin & Coffee Brn Opal, Green	F
00917	Brandied Peach on White, Orange	E

*Remaining stock only.

UROBOROS CODING

First 2 Digits Denote Characteristics			
00	Mottle	52	Smooth Ripple
10	Fracture	55	Draperly
11	Fracture/Streamer	57	Fipple
12	Streamer	60	Smooth
14	Fracture/Stringer	65	Granite
20	Spot Mottles	66	Granite Mottle
50	Herringbone Granite Ripple	70	Fibroid
51	Granite Ripple	80	Radium

SPECIAL NOTE: COLOUR DESCRIPTION LISTS BASE COLOURS FIRST, then less significant colours.

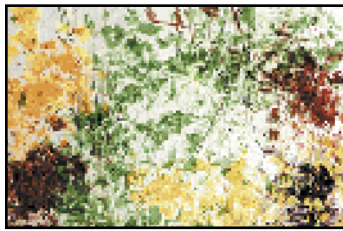
FUSIBLE GLASS - See Fusing Section C
 Uroboros makes an artful array of fusible glass in System96 and 90COE; see Section C - Fusing for details.

90COE

A - ART GLASS



CG FALL -
Amber, Golden
Yellow, Flame,
Woody
Greens



1125 -
Clear With 3
Shades Of Green
Fractures, Green
Streamers.

Stock No.	Description	Price Code
Fractures, Streamers and Stringers		
<i>Fracture</i>		
1016	Turquoise Brown w/ Mini Fractures	H
1040	White w/ Gold-Pink, Green, Blue Fractures	H
<i>Fracture Streamer</i>		
1112*	Yellow,Wht w/ Yellow,Orange Frac, Grn Str	H
1113	White w/ Blue,Green Frac, Green Str	H
1125	Clear w/ 3 shades Green Frac, Green Str	H
1129	Clear w/ Green, Gold-Pink Frac, Green Str	H
11295	Clear,Wht w/ Gold-Pink,Wht Frac, Green Str	H
11296	Clear,Gold-Pink w/ White Frac, Green Str	H
1135	Clear w/ Green, Yellow Frac, Green Str	H
1138	Clear w/ Yellow,Orange,Red Frac, Brown Str	H
1145	Clear w/ Green, Red Frac, Green Str	H
1151	Clear w/ Purple, Blue Frac, Green Str	H
1186	Blue,Grns w/ Blue,Grn,Pink Frac, Brown Str	H
1191	Clear w/ Amber,Blue,Purple Frac, Brown Str	H
<i>Streamer</i>		
12297	Clear, White, Gold-Pink, Blue, Clear Streamers	H
12543	Blue, Purple, Cream, Clear Streamers	G
<i>Fracture/Stringer</i>		
14921	Amber Opal w/ White Frac w/Black String on Clear	H
Collage Glass <i>Heavy fractures spread like a collage with random black streamers.</i>		
CG FALL	Amber,Golden Yellow,Flame, Woody Greens	M
CG SPRING	Greens,Blossom Pink,Lacy White	M
CG SUMMER	Yellow,Orange,Purple,Blue	M
CG WINTER	Icy Tones of Blue,Plum,Taupe,Black,White	M
Spot Mottles		
20055	White on White w/ Clear	E
20074	Dolphin Opal w/ Sesame Transparent	E
20362	Goldenrod Opal w/ Transparent Amber	E
2042	Cerulean Blue Opal w/Light Blue Transparent	E
20546	Mulberry Plum Opal w/ Plum Transparent	E
20732	Avocado Opal w/ Yellow-Green Transparent	E
20765	Chartreuse Opal w/ Light Green Transparent	E
20796	Blue-Green Opal, Light Blue Transparent	E
20918	Red Amber Opal on Pale Amber Transparent	E
2092	Antique White Opal w/ Yellow Amber Transp	E

*Remaining stock only.

Bold type indicates new glass since last printing.

Uroboros Sample Set

UR SAMPLES	Uroboros Factory Sample Set
------------	-----------------------------

Stock No.	Description	Price Code
Herringbone Granite Ripple		
5000-90	Clear	CF
5000IR-90	Clear Iridescent	CFI
5005	White	C
5014	Light & Dark Brown, Green	D
5015	Emerald,Chartreuse,Turq Green	C
5029	Gold-Pink, White	G
50542	Blues & Violet, Clear, White	E
5059	Pink/Green on Green/White	G
5074	Emerald, Spring & Light Greens	E
50912	Butterscotch & Coffee	C
Granite Ripple		
51361	Amber & Yellow on White	C
51778	4 Green Mix, Violet Highlights	D
51914	Dk Brown,Coffee,Butterscotch	D
Smooth Ripple		
5220	Ruby & Red on White	D
5248	Aqua Blue, Sea Green, White	C

Uroboros "PRIME CUTS"

A "meaty selection" containing 150 pounds of assorted glass in cut sizes: 12" sq., 12" x 9" and 12" x 6". Contains: Flower, Leaf, and Background glass in a variety of textures and colours. We sell many Prime Cuts crates and we have never had a complaint - just compliments.

UR PRIME	Uroboros "Prime Cuts Case" - 150 lbs
----------	--------------------------------------

Uroboros "GARDEN VARIETY PACK"

Contains 25 pieces size 6" x 12" - approximately 12.5 sq. ft. total. 8 pieces of flower glass, 8 pieces of leaf glass and 9 background pieces. A great little case for making a Tiffany lamp.

UR GVP	"Garden Variety Pack", 12.5 Sq.Ft.
--------	------------------------------------

Uroboros "SHORT CUTS"

20 half sheets (15" x 24") of assorted colours and textures of "Uncategorized" glass, including iridized. The net glass area is 50 sq. ft., and the gross weight approximately 120 lbs.

UR SCUT	Uroboros "Short Cuts" Case
---------	----------------------------

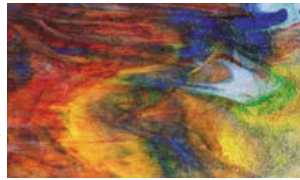
Uroboros "CUT UPS"

A selection of twenty 12" squares, full range of styles and textures from Uroboros classics to their experimentals. Weight 40 lbs.

UR CUPS	Cut Ups; 20 pcs Assorted 12" Squares
---------	--------------------------------------



6595
Seven Colour
Granite Mix



70902-90
Pale Amber
Fibroid Cathedral

Stock No.	Description	Price Code
Streaky		
60005	Clear w/ Wispy White	B
6014	Lt & Dk Brown w/ Emerald Green	C
6016	Light Brown & Turquoise Green	C
60165	Greens, Browns & Yellow	D
60171	Cappuccino & Paprika	E
60191	Blue,Honey,Yellow,Green Highlights	C
6020*	Ruby & Red on White	C
6025	Crimson,Red,Pumpkin,White,Clear	D
60285	Cream, Gold-Pink & Clear Highlight	L
60287	Cream/Gold-Pink & Forest Green	L
6029-96	Gold Pink & White	HF
60290	Gold-Pink, Yellow on White	F
60291	Gold-Pink, Lemon Yellow on White	H
6037	Orange, Yellow on White	C
6038	Green, Orange & Pumpkin	D
6039	Cobalt Blue, Red, Orange, Green	C
60391	Yellows, Blues, Reds	E
604240-96	Cobalt Blue on Clear	CF
604245-96	Cobalt Blue on White	CF
60466*	Sky Blue, White, Pastel Pink	C
605000-96	Chocolate on Clear	CF
605005-96	Chocolate on White	CF
6054	Cobalt/Sky Blue, White, Gold-Purple	D
60541	Cobalt, Sky, Violet, Gold-Purple	H
60543	Regatta Blue, Purple, Cream	C
6060	Yellow, Orange, White, Greens	D
6061	Orange, Red, white, Greens	D
606120-96	Grenadine Red on Clear	EF
606125-96	Grenadine Red on White	EF
60625	Opal Red w/ Dark Red	G
6070	3 Greens, Blue Red, Amber	D
6074	Emerld, Spring & Lt. Greens w/ Wht	D
607550-96	Fern Green Opal on Clear	CF
607555-96	Fern Green Opal on White	CF
60751	Green, Honey Ivory on White	B
6077	Forest Green & Chartreuse	D
6091*	Honey Amber & Coffee	D
60915	Golden Amber, Yellow, White	C
6096	Yellows,Blues,Reds,Grns,Gold-Pink	E

*Remaining stock only.

Bold type indicates new glass since last printing.

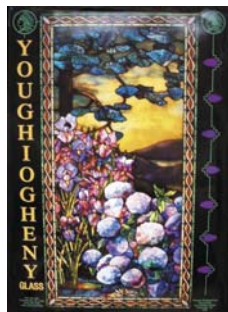
Stock No.	Description	Price Code
Granite		
6505	White	B
6514	Dark & Light Brown w/ Emerald Green	C
65145	Dk/Lt Browns, Greens, Brown Streamers	F
6517	Light & Dark Browns	B
6520	Ruby & Red on White	C
65287	Cream, Gold-Pink, Forest Green	L
6529	Gold-Pink & White	F
65299	Clear, White, Gold-Pink, Purple	H
6535	Canary Yellow	E
6548	Aqua Blue, Sea Green, White	B
65540	Sky Blue, White, Cobalt Blue, Purple	C
65542	Blues, Violets & Clear	D
6574	Emrald, Spring, & Light Greens	D
6585	Blues, Sea Green, Gold-Pink, Violet	D
6585IR	Blues, Greens, Gold-Purple, Gold-Pink Irid	DI
65850*	Gold-Pink, Gold-Purple, Blues, Green	I
65851*	Regatta Blue, Sea Green, White, Gold-Pink	D
6586	Blues, Greens, Cream, Pink, w/ Grn Fract	F
6592	Amber, Yellow on Cream	B
6595	Blues, Red, Yellow, Green, Gold-Pink	E
6595IR	Blues, Yellow, Gold-Pink, Irid	EI
65951	Yellow, Red, Blue, Gold-Pink, White	E
Granite Mottled		
66030*	Pastel Pink, White, Plum, Green	E
66298	Gold-Fuchsia, Raspberry	L
66366*	Canary Yellow on White	E
66793	Khaki, Dark & Yellow Greens w/ Cream	F
Draperies (price is per sheet)		
5504	Off-White, Gold-Pink, Gold-Purple	J
5505	White	J
5529	Gold-Pink & White	J
Fibroid Cathedrals		
7000-96	Clear	AF
7000IR-90	Clear, Iridescent	AFI
70402-90	Aqua Blue	CF
7056-90	Black Opal	CF
7056IR-90	Black Opal, Iridescent	CFI
70701-90	Evergreen	AF
70901-90	Golden Amber	AF
70902-90	Pale Amber	AF
Radium		
8000-96	Clear	AF
8056-96	Black Opal	CF
8056IR-90	Black Opal, Iridescent	CFI

A - ART GLASS



Youghioghenny was founded in 1976 by one of the industry's leading colour experts, John W. Triggs. The colour and texture instilled in every hand-made sheet of glass are favoured by the makers of Tiffany lamp reproductions so that they are practically indistinguishable from the originals. The waxiness and ice-like qualities of stipple

have been elusive and difficult to obtain. In the manufacturing of stipple, colours added appear to tear raggedly through the glass giving a three-dimensional effect, rather than bleed and become muddy as in the case of traditional florine glasses.



Youghioghenny Little Braves and More

YO LB	Little Braves, 30 Sqft Assorted Case
YO LB-SP	Little Braves; all Stipples - 30 Sqft
YO SAMSP	Stipple Sample Set
YO POSTER	Youghioghenny Poster (shown left)

A quote from Paul Crist, owner of Odyssey:

"Stipple is a revolutionary development. There is nothing like it on the market. Stipple works on a whole different principle. The remarkable quality about stipple glass is the unique way in which it disperses light. Traditional mottled glasses impart an orangish gray cast to the glass. This is particularly noticeable in cool flower colors - red, pinks, magentas - which appear deadened by the fluorines mottles. Stipple uses crystalline inner structure to disperse light. Greens are crisp and leafy; reds are pure ruby; pinks and magentas sing with vibrancy. It's the perfect glass to make lamps with."

Youghioghenny Glass Facts

The prefix for Youghioghenny is "YO". Please add to codes when ordering.

Sheet & Case Sizes:

- Sheet Size is about 24" x 36", approx 6 sq.ft.
- A full case contains 45 sheets.

Pricing:

- Youghioghenny is priced by the square foot.

Stock No.	Description	Price Code
Stipple		
1000RSP	Ice White Stipple Ripple	2
1000SP	Ice White Stipple Glass	2
1000SP/2	Ice White Stipple Glass- 24" x 18"	2
1007RSP	Ice White & Pink Ripple Stipple	2
1007SP	Ice White & Pink Stipple	2
1053SP	Ice White/Silver Yellow/Purple	2
1054SP	Ice White/Silver Yellow/Green	2
1057SP	Ice White & Peach Gold Stipple	2
1074SP	Ice White/Green/Pink Stipple	2
1097RSP	Ice White,Red,Pink Ripple Stipple	2
1097SP	Ice White With Red And Pink	2
1100SP	White With Dense White Opal	2
1107SP	Two Whites W/Gold Pink Stipple	2
1109SP	Two Whites W/Red Stipple	2
1137SP	Two Whites W/Purple & Gold Stp	2
1144SP	Two Whites W/ Dark Green Stipple	2
1157SP	Two Whites W/Peach Gold Stipple	2
1165SP	Ice White, Cobalt & Peach Gold	2
1167SP	Two Whites W/Gold Purple& Pink	2
1174SP	Two Whites,Dk Green & Gold Pnk	2
1176SP	Two Whites/Gold Pink & Dk Blue	2
1177SP	Two Whites/Bubble Gum & Pink	2
1300RSP	Ice White & Purple Rip. Stipple	2
1300SP	Ice White & Purple Stipple	2
1302SP	Ice White,Amber & Brown Stipple	2
1309SP	Ice White/Purple/Copper Red	2
1364SP	Purple, Green & White Stipple	2
1431SP	Ice White W Lime/Emerald Green	2
1499SP	White, Dark Green W/Copper Red	2
1537SP	Ice White/Yellow/Purple/Pink	2
1567SP	White/Yellow/Blue/Purple/Green	2
1574SP	Ice White/Pink/Green/Yellow	2
1634SP	Ice White/Green/Blue & Purple	2
1650SP	Blue/Ice White/Yellow Stipple	2
1663SP	Blue And Purple With Ice White	2
1665SP	Ice White,Turq.,Cobalt & Yellow	2
1697SP	Ice White, Red, Blue & Pink	2
3000SP	Mauve Stipple	2

Stock No.	Description	Price Code
Stipple Cont'd...		
3457SP	Ice White/Green/Purple/Peach	2
4000SP	Pale Green Stipple	2
4117SP	Green, Ice White, Bluish Gray	2
4302SP	White, Green & Black Stipple	2
4444SP	Green With Dense Green	2
4507SP	Mint Green, Yellow W/Red Higlhts	2
4637SP	Light & Dk Grn/Blue/Bubblegum	2
4644SP	Ice White With Green Shading	2
4676SP	Light Green, Blue & Gold Purple	2
5002SP	Solid Beige Stipple	2
5009SP	Yellow & Red Stipple	2
5409SP	Yellow, Red & Green Stipple	2
5502SP	Beige Stipple W/ Dense Beige	2
5506SP	Orange Brown, Blue & Yellow	2
5562SP	Two Beiges W Cobalt Blue Stipple	2
55CRSP	Two Beiges W/ Copper Red Stipple	2
5642SP	Beige, Copper Cobalt Blue, Green	2
5697SP	Silver Yellow, Blue & Red	2
6010SP	Light Blue Stipple	2
6016SP	Light & Dark Sky Glass	2
6064SP	Light & Dark Blue With Dark Green	2
6314SP	Copper Blue/White/Purple/Green	2
700SP	Blue/Gray Stipple	2
900DSP	Dark Waterglass, Blue/Green/Purple	2
900LSP	Light Waterglass, Blue/Green/Pink	2
9100SP	Landscape Stipple	2
9150RSP	Laburnum Rippled Stipple	2
9150SP	Laburnum Stipple	2
N057SP	Neodymium/Peach Gold/Bubblegum	2
N367SP	Neodymium/Pink/Dk Purple Blue	2
N6347SP	Neodymium Pink/Blue/Purple	2
N6637SP	Neo Pink/Blue/Purple/Bubblegum	2
NEO-SP	Neodymium Stipple	2
NN637SP	Two Neo's W/Pink, Blue & Purple	2
NN63SP	Two Neo's W/ Blue And Purple	2
NN67SP	Two Neo's W/Gold Pink & Blue	2
NN77SP	Two Neo With Bubble Gum Stipple	2
NN-SP	Neo Stipple W/ Neo Opal	2



Stock No.	Description	Price Code
1043RG	Brown/Green/White Reproduction	4
1074RG	White Opal, Dk Grn, Gold Pink	4
9100	Landscape, Amber & Green	4
9150A	Laburnum "A", White & Yellow	4
9150B	Laburnum "B", Gold & Yellow	4
9150C	Laburnum "C", Gold, Yellow & Green	4
9200A	Wisteria "A", Blue & Green	4
9200B	Wisteria "B", Darker	4

Stock No.	Description	Price Code
9200C	Wisteria "C", With Purple	4
NEO MIX	Neodymium Blue Mix	4
NEO-R	Neodymium Ripple	4
1000HSI	Irid Ice White High Strike	8
1007GHS	White Opal & Gold Pink HS	8
5000HS	Yellow Opal High Strike	8
9500HS	Orange Opal High Strike	8



now made by Youghiogheny Opalescent Glass

OCEANA produces a beautiful handmade mottled art glass. Each sheet contains varying degrees of density, creating a soft and delicate wispy background.

Oceana Glass Facts

The prefix for Oceana is "OCG".
Please add to codes when ordering.

Sheet Size:

- Sheet Size is approximately 18" x 27".
- Sheet weight is approximately 5.5 lbs.

Pricing:

- Oceana is sold "By the Pound".

ABOUT OCEANA

Mottles: Oceana mottles are soft, with a delicate, wispy background. Each sheet contains varying degrees of density, creating a stringy three-dimensional quality which is uniquely Oceana. A complete palette of colours is offered. Included are many flower glass combinations for which Oceana is considered among the best. Oceana mottle glass has numerous uses in all aspects of fine window and lampshade production.

900 Series: Dichromatic silver opal glass simply stated, is a glass that changes colour and intensity depending on the surrounding light. In reflected light, the glass appears opalescent, but in transmitted light, the glass comes alive with assorted shades of fiery pinks, reds and yellow. This distinctive glass is produced primarily for windows as its spectacular range of colours can best be appreciated when viewed through natural light.

Stock No.	Description	Price Code
301	Light Copper Blue Mottle	01
302	Cobalt Blue Mottle	01
303	Silver Yellow Mottle	01
324	Teal Green Mottle	01
325	Chrome Green Mottle	01
350	Cadmium Orange Mottle	01
363	Dark Copper Red Mottle	01
390	Opal White Mottle	01
600	Silver Yellow-Dark Red Mottle	01
603	White - Dark Green Mottle	01
604	Silver Yellow - Cobalt Blue	01
608	Copper Blue - Cobalt Blue	01
609	Dark Red - Cobalt Blue	01
610	Dark Green - Brown Mottle	01
611	Dark Red - Chrome Green Mottle	01
613	Copper Blue - Dark Green	01
614	White - Cobalt Blue Mottle	01
615	Dark Green - Cobalt Blue	01
620	White - Copper Blue Mottle	01
621	White - Cadmium Orange Mottle	01
624	White - Manganese Purple	01
625	Copper Blue - Purple Mottle	01
627	Silver Yellow - Dark Green	01
628	Teal Green - Dark Green Mottle	01
633	Cadmium Orange - Green Mottle	01
700	White-Dark Red-Yellow Mottle	02
706	White - Green - Cobalt Blue	02

Stock No.	Description	Price Code
710	White-Dark Green-Red Mottle	02
712	Copper Blue-Green-Red Mottle	02
714	Red-Cobalt Blue-Green Mottle	02
718	White-Green-Brown Mottle	02
720	Silver Yellow-Red-Cobalt	02
730	Silver Yellow-Red-Green	02
900	Silver Yellow W/Pink Highlights	03
905	Silver Yellow - Rose Red	03
910	Rose Red w/ Blue Highlights	03
910R	Rose Red w/ Blue Hgts Ripple	03
910W*	Rose Red - White	03
925	Rose Red - Cobalt Blue	03
925R	Rose Red-Cobalt Blue Ripple	03
925W	Rose Red-Cobalt Blue-White	03
930R*	Red-Blue-Green Ripple	03
935R	Rose Red - Green Ripple	03
945	Rose Red - Clear	03
945R	Rose Red - Clear Ripple	03
980	Rose Red - Purple	03
980R	Rose Red - Purple Ripple	03
601	White - Gold Pink Mottle	04
602	White - Gold Purple Mottle	04
701	White-Silver Yellow-Gold Pink	04
702	Copper Blue-Yellow-Gold Pink	04
703	White/Turq/Blue/Gold Pink	04

OCG SAM900	900 Series Dichromatic Samples
OCG SAMMOT	Mottle Sample Set

Bold type indicates new glass since last printing.

*Remaining stock only.

A - ART GLASS



Vegla is part of the Saint-Gobain group. Its factory, located in Manheim, Germany, has one of the most modern glass rolling plants in the world. "Sahara" is a 3mm thick glass, with softly undulating texture, reminiscent of sand dunes. Hollander carries several different "Sahara" colours.



Vegla C80 "Sahara"

SAHARA (PATTERN C80)

Stock No.	Description	Price Code
001X	Clear	AX
102X	Pale Amber	BX
113X	Medium Amber	BX
121X	Light Blue	BX
133X	Medium Blue	BX
135X	Medium Blue	BX
137X	Dark Blue	CX
249X	Light Green	BX
404X	Light Amethyst	BX
408X	Medium Amethyst	BX

"Sahara" (Pattern 80) Glass Facts

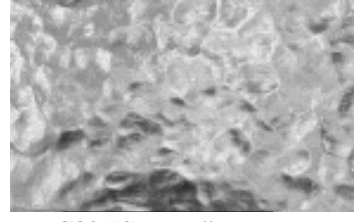
The prefix for Sahara is "C80". Please add to codes when ordering.

Sheet & Case Sizes:

- Sheet size is 32.5" x 41.5".
- Unopened factory cases contain 50 sheets, size 65" x 41.5".

Pricing:

- "Sahara" is sold by the square foot.



C80 "Sahara" Texture

C80 SAMPLES | Vegla Sahara Sample Set

MORE TEXTURED CLEAR GLASS IN BIN SIZE SHEETS

Product Code	Description	Sheet Size	Price Code
For Full Details And Photos, See Section D.			
Vegla			
CA 001X	Clear, 4mm	32-1/2" x 42-1/2"	CAAX
VGL 043X	Listral M (1/2" Squares), 4mm	32-1/2" x 42-1/2"	VGLLX
VGL 054X	Sparkolite, 4mm	32-1/2" x 42-1/2"	VGLAX
VGL 110X	Listral D (1/16" Squares), 4mm	32-1/2" x 42-1/2"	VGLAX
VGL 123X	Monumental (Artic), 4mm	32-1/2" x 42-1/2"	VGLAX
VGL 155X	Listral F (1/8" Squares), 4mm	32-1/2" x 42-1/2"	VGLAX
VGL 159X	Listral K (Tiny Squares), 4mm	32-1/2" x 42-1/2"	VGLAX
VGL 178X	Silvit, 4mm	32-1/2" x 42-1/2"	VGLLX
VGL 182X	Altdeutsch K, 4mm	32-1/2" x 42-1/2"	VGLGX
VGL 264X	Karolit (1" Squares), 4mm	32-1/2" x 42-1/2"	VGLBX
VGL 553X	Narrow Reed (1/8"), 4mm	32-1/2" x 42-1/2"	VGLAX
Frandsa			
FDS 410X	Novoglass, Acid Etched, 3mm	35" x 42"	FDSCX
FDS 435AX	Mosaico, Acid Etched, Azul Hghlts, 4mm	35" x 42"	FDSEX
Glaverbel			
GLA 900/3X	Crepi, 3mm	36" x 42"	GB01X
GLA 920/4X	Gothic, 4mm	31-1/2" x 42"	GB07X
GLA 930/3X	Chinchilla, 3mm	31-1/2" x 42"	GB09X
GLA 930/4BX	Chinchilla Bronze, 4mm	31-1/2" x 42"	GB20X
GLA 970/4X	Delta, 4mm	31-1/2" x 42"	GB07X
GLA 980/4X	Aero, 4mm	31-1/2" x 42"	GB07X
GLA SB970/4X	Delta Sandblasted, 4mm	31-1/2" x 42"	GB15X
GLA SB970/4BX	Delta Bronze Sandblasted, 4mm	31-1/2" x 42"	GB19X
Pilkington			
PIL 500/4X	Taffeta, 4mm	26" x 42"	PILDY
PIL 520/4X	Cotswold, 4mm	26" x 42"	PILBX
PIL 535/4X	Reeded 1/2", 4mm	30" x 42"	PILDY
PIL 540/4X	Flemish, 4mm	26" x 42"	PILCX
PIL 560/4X	Sycamore, 4mm	26" x 42"	PILCX
PIL 570/4X	Everglade, 4mm	26" x 42"	PILDY

NEW!

**Bin Size Sheets
Of Textured Clear
Glass Now Available
For Your Convenience!**

No more wrestling with architectural size sheets of glass. You can now easily offer more choice for your cabinetry customers! Order these new handy bin size pattern glasses from these 4 premium brands -

Vegla, Frandsa, Glaverbel and Pilkington. For a selection of larger sheets of textured glass, see Section D - Architectural Glass.

Hollander Glass Canada Inc.

OPTIMUM

Optimum Art Glass specializes in the manufacture of brilliant textured cathedrals. They are unlike any others available and you must really see them to appreciate their beauty.

Optimum Glass Facts

The prefix for Optimum is "OPT". Please add to codes when ordering.

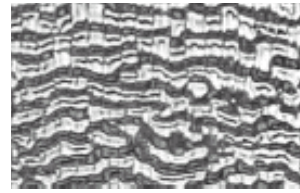
Sheet Size:

- Sheet size is approx 20" x 40" - about 5 sq. ft./sheet
- Sheets are trimmed on all four sides

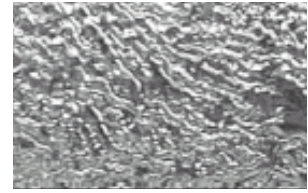
Pricing:

- Optimum is priced by the square foot.

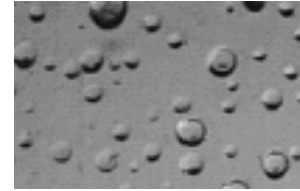
EXAMPLES OF GLASS TEXTURES



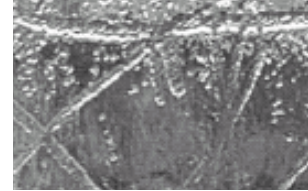
Allegre (AL)



Slush (AL)



Noogie (N)



Trapunto (T)

Stock No.	Description	Price Code
230N	French Blue "Noogie"	C
260N	Seafoam Green "Noogie"	C
401AL	Clear "Allegre"	B
401N	Clear "Noogie"	A
401NIR	Clear Noogie, Iridized	AI
401SL	Clear Slush	A
401T	Clear Trapunto	A
401TIR	Clear "Trapunto" Iridized	AI

OPT SAMPLES	Sample Set
-------------	------------

FLASHED WHITE OPAL ON CLEAR

Desag manufactures "Flashed White Opal on Clear" glass utilizing a drawn glass process. For thicker sizes of Flashed White Opal, see Section D - Architectural Glass.

Product Code	Description
GL 700X	Flashed White Opal; 2.7 to 3.3 mm, 43.5" x 31.5"

Code Change

Please note that there has been a coding change with this style. An "X" has now been given as a suffix to the smaller size of Flashed White Opal for ease in ordering. Please take note of this change for your next order. For larger sheet sizes, see Section D - Architectural Glass.

FLOAT GLASS AND MIRROR

For mirrored drawn antique glass, see Section B - Antique Glass.
 For 4 mm to 6 mm float glass, see Section D - Architectural Glass.
 For larger sheet sizes of all of these styles, see Section D - Architectural Glass.

Product Code	Description	Bin Sheet Size
GL 002X	2mm Clear Float	24" x 36" - 42"
GL 003X	3mm Clear Float	24" x 48"
GL 200X	3mm Clear Mirror	24" x 48"
GL SB003X	3mm Sandblasted Clear	31.5" x 42"

Code Change

Please note that there has been a coding change with this style. An "X" has now been given as a suffix to the smaller size of Float Glass and Mirror for ease in ordering. Please take note of this change for your next order. For larger sheet sizes, see Section D - Architectural Glass.

A - ART GLASS

CHINESE GLASS

CHINESE PATTERN GLASS

Chinese Pattern Glass Facts

The prefix for Chinese Pattern Glass is "CPG". Please add to codes when ordering.

Sheet Sizes:

- Sheets sizes are listed in the chart below.

Pricing:

- Chinese Pattern Glass is sold "By the square foot".

CHINESE 39 SERIES

PATTERN GLASS

This mainland Chinese factory has been producing cathedral glass for several years.

Chinese 39 Series Pattern Glass Facts

The prefix for Chinese Pattern Glass is "CPG". Please add to codes when ordering.

Sheet & Case Sizes:

- Sheets are 24" x 48" = 8.0 sq.ft. per sheet
- Full Case contains about 60 sheets or 480 sq.ft.

Pricing:

- Chinese CPG Pattern Glass is sold "By the square foot", and pricing is listed by product code in the price list.

Product Code	Description	Sheet Size
CPG 01HV*	Clear lava, 3mm	32" x 40"
Hollander's Nature Glass Collection		
CPG 6410X*	Crystal Glass, 4mm	29.5" x 39.5"
CPG 6420X*	Shimmer Glass, 4mm	29.5" x 39.5"
CPG 6440X*	Tree Bark Glass, 4mm	23.5" x 39.5"
CPG 6490X*	Morning Mist Acid Etched, 4mm	32" x 32"
CPG 6410*	Crystal, 4mm	59" x 79"
CPG 6420*	Shimmer, 4mm	59" x 79"
CPG 6440*	Tree Bark, 4mm	47" x 79"
CPG 6490*	Morning Mist Acid Etched, 4mm	64" x 64"

Product Code	Description
3901	Granite Clear
3902	Clear Waterlike Texture
3902G	Grey Waterlike Texture
3903	Clear Reamy
3903G	Grey Reamy
3904	Clear Tight Waterlike Texture
3906	Clear Ripple, 3.8 mm thick
3907	Clear Seedy Cathedral

*Available stock only.

CHINESE GLASS PAKS

"Premium Fracture/Streamer Dragon Paks"

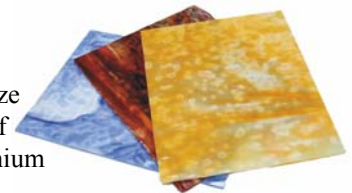
Contains 30 pieces, size 13" x 10" for a total of 27 square feet of premium fracture streamer glass.



GL HI-DRAGON-F Premium Fracture/Streamer Dragon Pak

"Premium Mottle Dragon Paks"

Contains 30 pieces, size 13" x 10" for a total of 27 square feet of premium mottle glass.



GL HI-DRAGON-M Premium Mottle Dragon Pak



"Lazo Glass Paks"

These premixed cases of Chinese art glass contain an assortment of opals with some cathedrals and textures. Contains 80 pieces 10" x 13" for a total crate of 72 square feet.

GL LAZO Lazo Glass Pak

"Original Dragon Paks"

These Dragon Paks, made in China, contain 80 sheets approx. 10" x 13" (72 sq.ft.). Each Pak contains a selection of approx 30 types of opalescent art glass. Customers have told us that the selection is great, the glass cuts well, and the price is irresistible!

GL DRAGON Dragon Pak

Hollander Glass Canada Inc.

GLUE CHIP

CLEAR GLUE CHIP

Clear Glue Chip is one of the “commodity” glasses and if we were in the grocery business, we would think of glue chip as the potatoes” or “carrots” part of our architectural glass line. The quality varies greatly, and this is reflected in the price. Unfortunately, we cannot entertain requests for credits based on scratches on the non glu-chipped side or for uneven chip pattern.

This glass is easy to cut, inexpensive, and is traditionally used as background glass. The pattern resembles a visit from Jack Frost on the window.

Glue chip “made in USA” is the best quality, followed by Chinese glue chip of which there are two types. With glue chip, like many other things, you get what you pay for.....

Stock No.	Description	Sheet Size	Full Case Qty (square ft)
GL 080-3X	3mm, made in USA, top quality	24” x 42”	-
GL 080-5	5mm, made in USA, top quality	48” x 84”	800
GL 099	3mm, made in China	24” x 36”	600
GL 099L	3mm, made in China	48” x 84”**	1260
GL 099L-5	5mm, made in China	48” x 84”	840
GL 100	3mm, made in China	24” x 36”	600
GL 100DC	3mm “double chip”, China	24” x 36”	600
GL 260S*	5mm, made in China	36” x 72”	630

*Available stock only.

**Size can vary from shipment to shipment, availability is also limited.

COLOURED GLUE CHIP

Stock No.	Description	Sheet Size	Price Code
ZDR 18LL*	Orange	32” x 42”	H
ZDR 51LLIR	White iridescent	varies	E
ZDR 100IR	Clear iridescent	24” x 24”	F
ZDR 102	Pale amber	32.5” x 41.5”	A
ZDR 113	Medium amber	32.5” x 41.5”	A
ZDR 121	Light cobalt blue	32.5” x 41.5”	A
ZDR 123	Medium green	24” x 24”	D
ZDR 133	Light-medium cobalt blue	24.5” x 41.5”	A
ZDR 135	Medium cobalt blue	24.5” x 41.5”	A
ZDR 136	Dark blue	24” x 24”	D
ZDR 137	Dark cobalt blue	32.5” x 41.5”	B
ZDR 151	Red	24” x 24”	H
ZDR 161	Selenium Yellow	24” x 24”	H
ZDR 171	Orange	24” x 24”	H
ZDR 249	Light green	32.5” x 41.5”	A
ZDR 404	Light amethyst	32.5” x 41.5”	A
ZDR 408	Medium amethyst	32.5” x 41.5”	A
ZDR 1102*	Light Amber	24” x 24”	C
ZDR 1808	Light Grey	24” x 24”	C
ZDR 5181	Bronze	24” x 24”	D
ZDR 5331	Turquoise	24” x 24”	C

ZDR SAMPLES	Coloured Gue Chip Sample Set
-------------	------------------------------

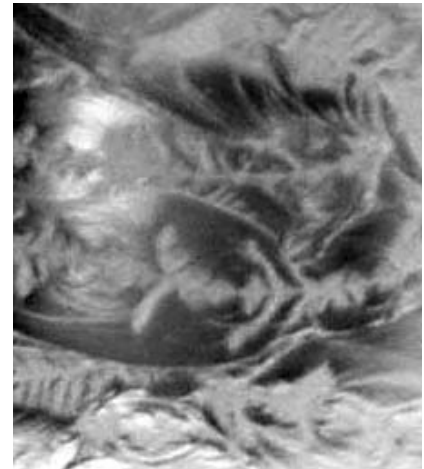
Bold type indicates new glass since last printing.

*Available stock only.

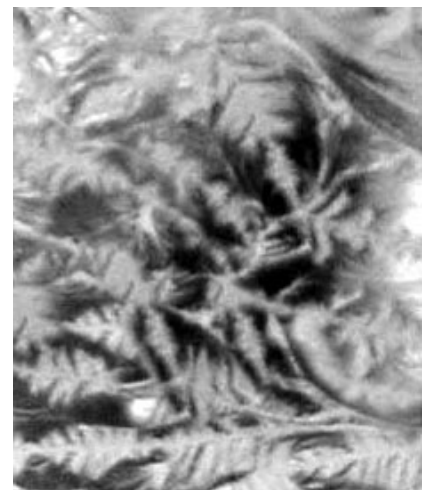
Hollander Glass Canada Inc.



Glue Chip



Glue Chip



“Double” Glue Chip

KOKOMO DALLES



DALLES

Dalles are slabs of glass, and are 8"x12"x1", packed 10 per box. They have excellent cutability, and the best colour consistency of any slab glass manufactured specifically for Dalle de Verre work.

Stock No.	Description	Price Code
Dalles (Kokomo colour number referenced)		
A-1	Dark Amber, Dalle 18DD	X
A-2	Medium Amber, Dalle 18D	X
A-3	Light Amber, Dalle 181	X
B-0	Dark Blue, Dalle 608	X
B-1	Dark Blue, Dalle 620	X
B-2	Medium Steel Blue, Dalle 610	X
B-3	Medium Blue, Dalle 624	X
C-1	Clear, Dalle 33	X
G-1	Dark Olive Green, Dalle 650	X
G-1.5	Medium Dark Green, Dalle 659	X
G-2	Medium Green, Dalle 661	X
G-3	Light Kelly Green, Dalle 662	X
G-4	Lime Green, Dalle 709	X
GY-1	Grey, Dalle 795	X
GY-2	Dark Blue Grey, Dalle 701	X

Stock No.	Description	Price Code
Dalles Cont'd...		
P-1	Dark Purple, Dalle 805	X
P-2	Medium Purple, Dalle 808	X
P-3	Pink, Dalle 880	X
R-0	Dark Red, Dalle 41	Y
R-1	Medium Red, Dalle 225LL	Y
TQ-1	Blue Green, Dalle 612	X
TQ-2	Green Blue, Dalle 509	X
V-0	Darker Violet, Dalle 853	X
V-1	Medium Violet, Dalle 861	X
Y-1	Yellow, Dalle 216LL	Y

Dalles Sample Set

KO SAMDALLE	Dalle De Verre Sample Set
-------------	---------------------------

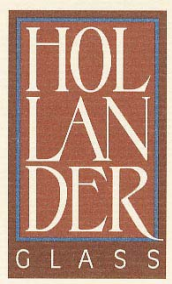


Photo: Our self-serve warehouse; an overhead view of our many rows of glass for your browsing. We stock 6,000 different stained glass and supply items.

Hollander Glass Canada Inc.