

Cone Art Kilns

Introducing CONE ART KILNS! EXCLUSIVE To Hollander Glass!



Proudly Canadian

Quality assured:

- Canadian manufacturer, producing quality kilns since 1982
- All kilns are CSA approved
- The included Stand comes pre assembled
- Extra thick 2.5" lid for better insulation and stability
- Extra thick 2.5"-3" walls for better insulation and stability
- Lid prop standard on every model
- Quality Bartlett controllers used
- Kanthal A-1 elements
- **Every kiln comes with one shelf, and a furniture kit to get you started**



BX117V3

OVERVIEW

- .69 Cubic feet
- 120 Volts
- Kanthal A-1 Elements
- Premium firebrick
- Fires to 1700°F
- 6" deep

DESCRIPTION

This is the perfect choice for the home studio for fusing, slumping and annealing glass. There are Kanthal A-1 elements in the lid, and the walls are 2 1/2" of premium grade firebrick. Jacket and fittings are all corrosion resistant stainless steel, and the unit can be plugged into a normal wall outlet (120V).

Controller

The unit comes with the economical quick set Bartlett 3 button controller (as shown). Also available is BX117V6 with full featured Bartlett controller.

FURNITURE KIT

- 1 - 13" dia x 5/8" full shelf
- 3 - 1/2" posts
- 1 - kilogram kiln wash



BX2809V6

OVERVIEW

- 3.3 Cubic feet
- 208 or 240 Volts (60 Amp breaker is required)
- Kanthal A-1 elements in the lid and walls
- 9" deep
- *Optional BZ100 Cone Art lid lifter available*

DESCRIPTION

This kiln is an excellent choice for doing large amounts of glass fusing and slumping. It is a full 28" across, and 9" deep. Also available is BX2813V6, the 13.5" deep version. The walls and lid are 3" brick which helps with slower cooling. The jacket and fittings are all made with corrosion resistant stainless steel. Kanthal A-1 elements are in both the lid and the walls for even firings. This model comes with the new lid lifter as an option. Just lift the lid with one finger!

Controller

Comes with the Bartlett V-6 full-featured controller for easy precise control. Also available is BX2809V3 with the Quick set Barlett 3 button controller, 9" deep or the BX2813V3 with the Quick set Barlett 3 button controller, 13.5" deep.

FURNITURE KIT

- 1 - 26" dia x 2/3" full shelf
- 3 - 1" posts
- 1 - kilogram kiln wash

Colour de Verre Molds

COLOUR *de* VERRE **NEW!**



Blossoms Mold (6)

FUS M0613

This single mold forms six blossoms in three sizes. The design is strong enough to stand on its own as a brooch, pin or bracelet. They can also be fused or attached to plates, platters, bowls or other castings. Fill weight: 6, 8 and 10 grams. Dimensions are 3/4", 1" and 1-1/4".



Oak Leaves (2) & Acorn Mold (2)

FUS M0614*

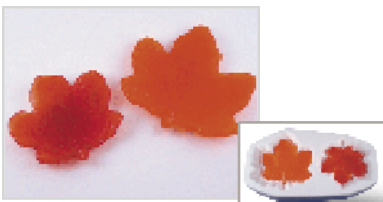
Each Oak Leaves and Acorn mold forms two different size leaves and two acorns. On the mold's reverse side is an undulating slumping surface. Finished castings can be placed on this surface and refired at a lower temperature to add subtle curves to the leaves. This imbues the object with a lifelike shape. Fill weight: 15 and 27 grams (leaves) and 7 grams (acorns). Dimensions are 2-1/2" and 3" (leaves) and 1" (acorns).



Tropical Leaves Mold (2)

FUS M0615*

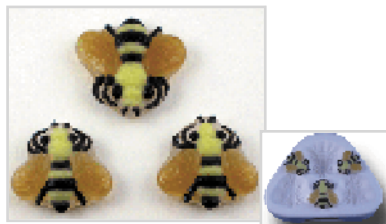
This mold forms two different size tropical leaves. On the mold's reverse side is a undulating slumping surface. Finished casting can be placed on this surface and refired at a lower temperature to add subtle curves to the leaves to imbue the casting with a lifelike form. Fill weight: 60 and 105 grams. Dimensions are 4" and 5-1/2".



Maple Leaves Mold (2)

FUS M0616*

This mold creates two size of maple leaves. On the mold's reverse side are two built-in slumpers. The finished castings can be used to embellish other, larger works or can be slumped into small bowls for appetizers or elegant salt cellars. Fill weight: 40 and 60 grams. Dimensions are 3" and 4".



Honey Bees Mold (6)

FUS M0308

Bees! This single mold forms three bees in two sizes. The design is strong enough to stand on its own as a brooch, pin or pendant. The castings can also be fused or attached to plates, platters, bowls or other works. Fill weight: 9 and 12 grams. Dimensions are 1" and 1-1/4".



Lily Pad (1) & Frog Mold (3)

FUS M0309*

Use this mold and create a single lily pad and three frogs. Turn the mold over and use the slumper built into the mold's reverse side to shape the lily pad casting into a small bowl. Attach the frogs to the bowl as feet to make a beautiful, finished piece. On the other hand, these same pieces can be collaged into plates, bowls, and platters. Fill weight: 124 grams (lily pad) and 23 grams (frogs). Dimensions are 5" (lily pad) and 1-1/2" (frog).



Shows finished product for blossoms, honey bees, and tropical leaves.

To view finished samples in full colour, go to our website, www.hollanderglass.ca

***Slumper
Shape On
Reverse**