

Colour de Verre Molds

COLOUR *de* VERRE **NEW!**



Blossoms Mold (6)

FUS M0613

This single mold forms six blossoms in three sizes. The design is strong enough to stand on its own as a brooch, pin or bracelet. They can also be fused or attached to plates, platters, bowls or other castings. Fill weight: 6, 8 and 10 grams. Dimensions are 3/4", 1" and 1-1/4".



Oak Leaves (2) & Acorn Mold (2)

FUS M0614*

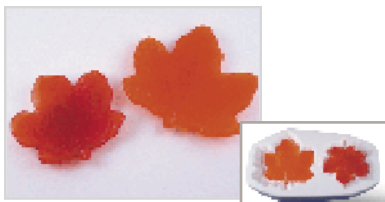
Each Oak Leaves and Acorn mold forms two different size leaves and two acorns. On the mold's reverse side is an undulating slumping surface. Finished castings can be placed on this surface and refired at a lower temperature to add subtle curves to the leaves. This imbues the object with a lifelike shape. Fill weight: 15 and 27 grams (leaves) and 7 grams (acorns). Dimensions are 2-1/2" and 3" (leaves) and 1" (acorns).



Tropical Leaves Mold (2)

FUS M0615*

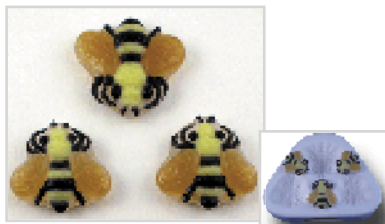
This mold forms two different size tropical leaves. On the mold's reverse side is a undulating slumping surface. Finished casting can be placed on this surface and refired at a lower temperature to add subtle curves to the leaves to imbue the casting with a lifelike form. Fill weight: 60 and 105 grams. Dimensions are 4" and 5-1/2".



Maple Leaves Mold (2)

FUS M0616*

This mold creates two size of maple leaves. On the mold's reverse side are two built-in slumpers. The finished castings can be used to embellish other, larger works or can be slumped into small bowls for appetizers or elegant salt cellars. Fill weight: 40 and 60 grams. Dimensions are 3" and 4".



Honey Bees Mold (6)

FUS M0308

Bees! This single mold forms three bees in two sizes. The design is strong enough to stand on its own as a brooch, pin or pendant. The castings can also be fused or attached to plates, platters, bowls or other works. Fill weight: 9 and 12 grams. Dimensions are 1" and 1-1/4".



Lily Pad (1) & Frog Mold (3)

FUS M0309*

Use this mold and create a single lily pad and three frogs. Turn the mold over and use the slumper built into the mold's reverse side to shape the lily pad casting into a small bowl. Attach the frogs to the bowl as feet to make a beautiful, finished piece. On the other hand, these same pieces can be collaged into plates, bowls, and platters. Fill weight: 124 grams (lily pad) and 23 grams (frogs). Dimensions are 5" (lily pad) and 1-1/2" (frog).



Shows finished product for blossoms, honey bees, and tropical leaves.

To view finished samples in full colour, go to our website, www.hollanderglass.ca

***Slumper
Shape On
Reverse**